

BOCEN



COMPANY PRESENTATION

BOCEN DISPLAY TECHNOLOGY CO., LTD.

www.bocentech.com

INDEX

1

• **Company Profile**

2

• **Company Locations**

3

• **Company Development History**

4

• **Annual Turnover**

5

• **Product Categories**

6

• **Facilities**



Company Profile

- Founded in 2010
- Product Category: LCD panel, COB & COG module, TFT, OLED, Backlight
- 3 factories
- 900 employees
- 65 quality responsible persons
- 20 R&D persons
- 35,000 m² workshop
- ISO9001, RoHS certificates

Company Locations



Shenzhen Office

Office

Address: 808, Esun tech building,
No. 22, Jia'an South Road,
Bao'an District, Shenzhen, China.



Shenzhen Factory

Samples & Small orders production

Address: 3F, Block 11, Huafeng International
Manufacturing Park, Wan'an Road, Shajing,
Bao'an District, Shenzhen, China.



Jiangxi 1st Factory

Big Orders Production
Monochrome Display

Address: Chengxi Industrial Park
Gaoan, Yichun, Jiangxi Province, China.



Jiangxi 2nd Factory

Big Orders Production
TFT Display

Address: Building 7, No. 4 Food Avenue,
Information Industry Park, Yichun,
Jiangxi Province, China.

Company Development History

2010

- Company established in Shenzhen

2013

- First production site set up in Jiangxi China

2015

- Second production site set up in Jiangxi China

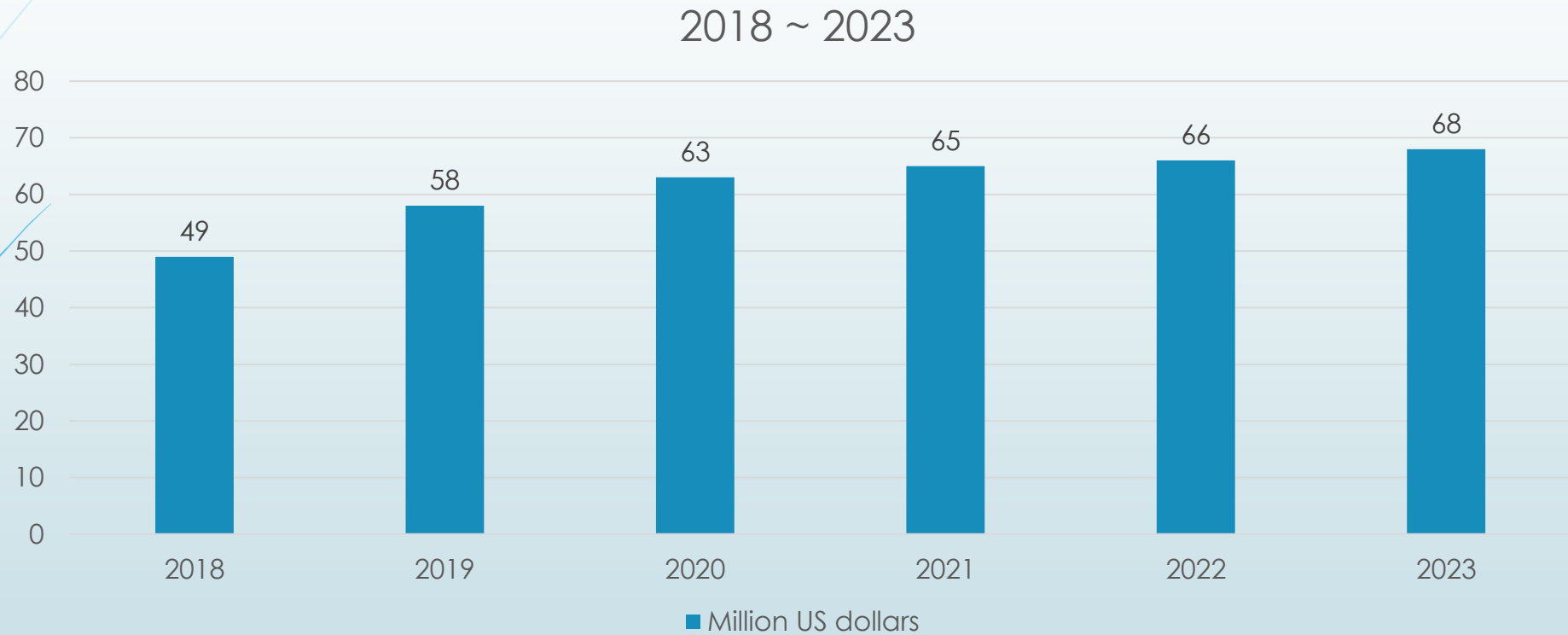
2018

- Employees up to 500 person

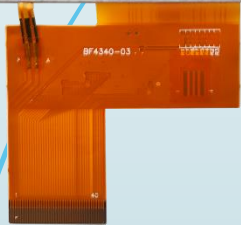
2020

- Set up OLED production line

Annual Turnover



TFT Product Categories



4.3"



9.35"

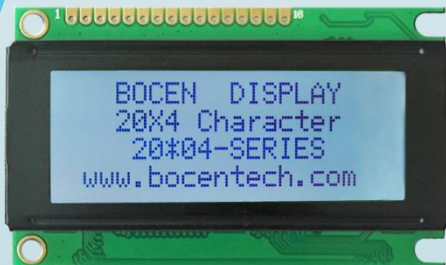
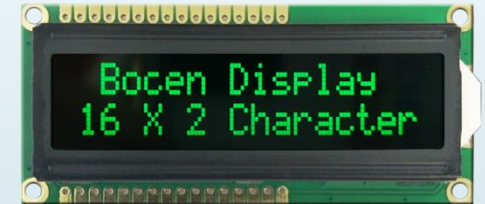
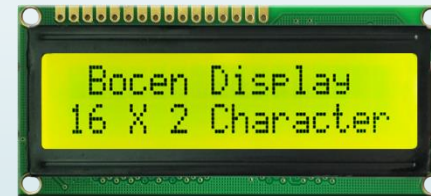
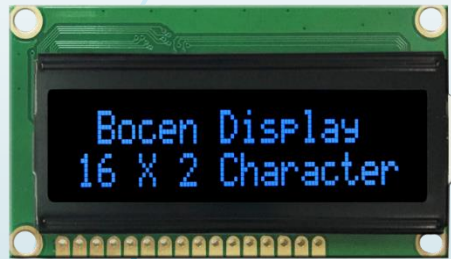
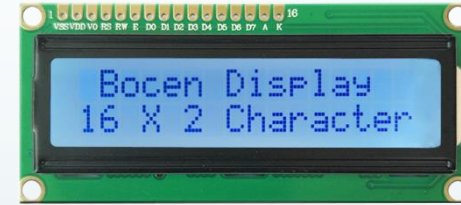


2.8"



8.0"

COB Product Categories



COG Product Categories



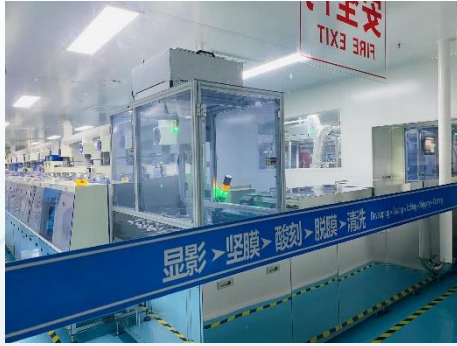
OLED Product Categories



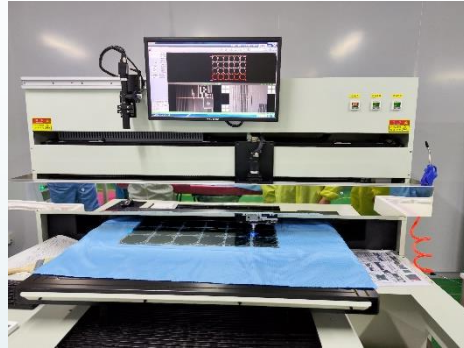
Application fields



Facilities



LCD Panel Production



Glass Cutting



SMT Soldering



IC Bonding



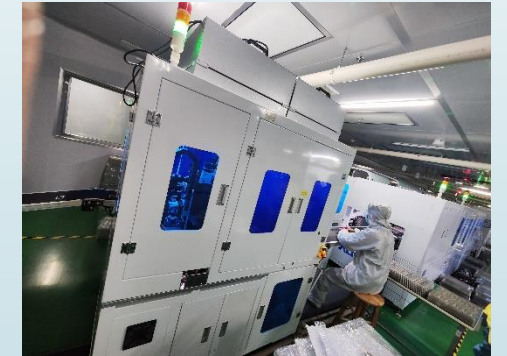
Automatic Production Line



AOI Inspection



Backlight Production



Backlight Assembling

BOCEN



THANK YOU!

BOCEN DISPLAY TECHNOLOGY CO., LTD.

www.bocentech.com