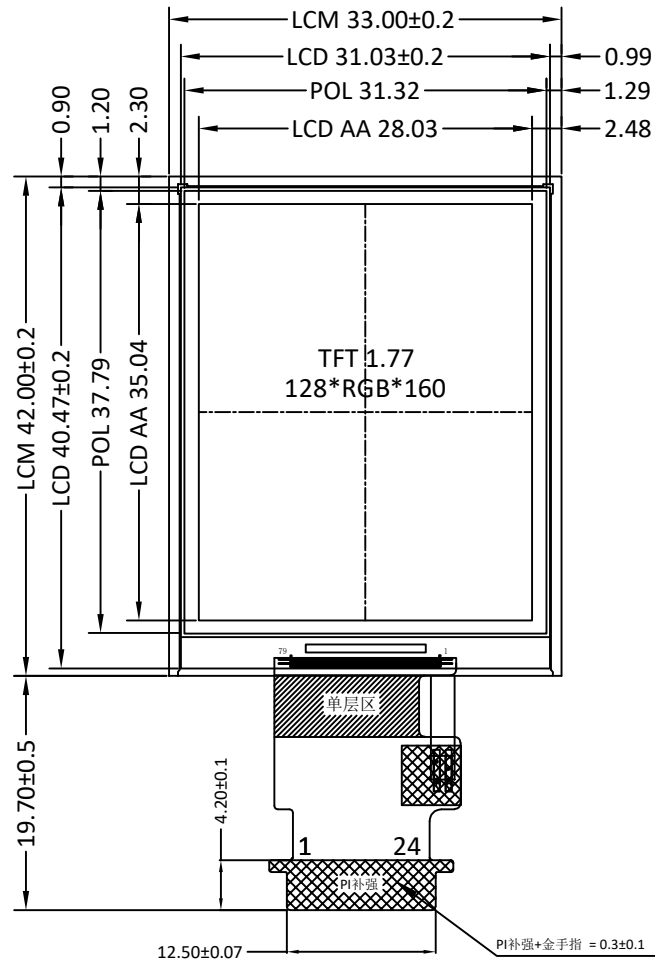


Version

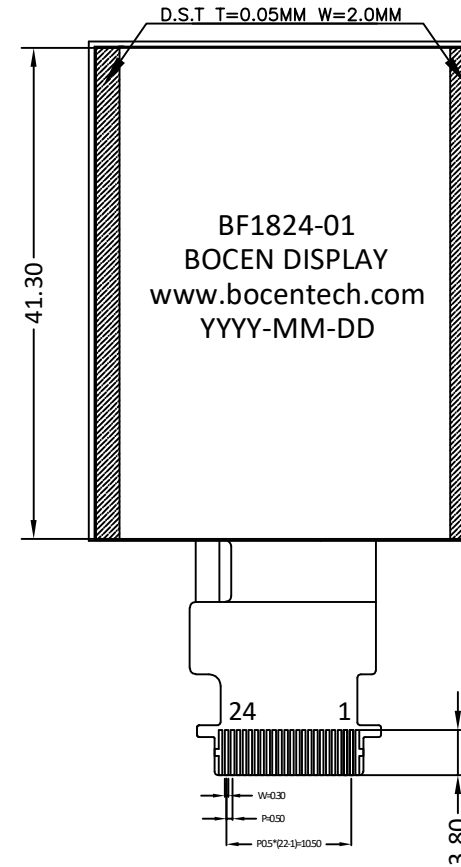
1.0

2021-01-15

New Issue



2.30±0.1(Excluding tape and FPC thickness)

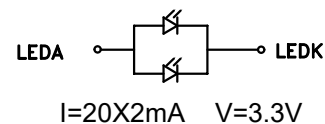


PIN	SYMBOL
01	NC
02	LEDA
03	LEDK
04	GND
05	VCI
06	IOVCC
07	P/S
08	CS
09	RESET
10	RS/SCL
11	WR/SRS
12	RD
13	DB7
14	DB6
15	DB5
16	DB4
17	DB3
18	DB2
19	DB1
20	DB0
21	SDA
22	TE
23	GND
24	NC

SPECIFICATIONS:

- DISPLAY TYPE: 1.77" / TN / 128x160
- DRIVE IC: GC9106
- OPERATING TEMPERATURE: -20 ~ 70°C
- STORAGE TEMPERATURE: -30 ~ 80°C
- VIEWING ANGLE: 12:00
- BACKLIGHT: 2 LED /PARALLEL
- CUSTOMER PART NO.: BOCEN STANDARD PRODUCT

Backlight circuit



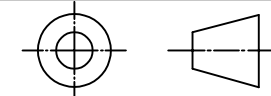
BOCEN DISPLAY TECHNOLOGY CO., LTD.

DESIGNED BY: Shawn

BF1824-01

VERSION: 1.0

CHECKED BY: William



NO.: 1 OF 1

APPROVED BY: Rio

UNIT: mm

Website: <http://www.bocentech.com>

DATE: 2021-01-15