

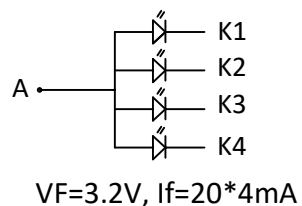
FPC Bending diagram
FPC Launch shipment

PIN	Symbol
1	SDI
2	SDO
3	IM0
4	IM1
5	IM2
6	IM3
7	RESET
8	VSYNC
9	HSYNC
10	DOTCLK
11	DE
12	DB17
13	DB16
14	DB15
15	DB14
16	DB13
17	DB12
18	DB11
19	DB10
20	DB9
21	DB8
22	DB7
23	DB6
24	DB5
25	DB4
26	DB3
27	DB2
28	DB1
29	DB0
30	RDX
31	WRX
32	DCX
33	CSX
34	GND
35	VCC
36	IOVCC
37	NC
38	NC
39	K
40	A

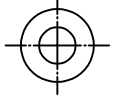
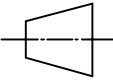
SPECIFICATIONS:

- 1. DRIVE IC: ST7789V
- 2. DISPLAY TYPE: 2.4" / TN / QVGA
- 3. OPERATING TEMPERATURE: -20 ~ 70°C
- 4. STORAGE TEMPERATURE: -30 ~ 80°C
- 5. VIEWING ANGLE: 12:00
- 6. BACKLIGHT: 4 LED, VF=3.2V, If=20*4mA
- 7. CUSTOMER PART NO.: BOCEN STANDARD PRODUCT

Backlight circuit



BOCEN DISPLAY TECHNOLOGY CO., LTD.

DESIGNED BY: Shawn	BF2440-02	VERSION: 1.0
CHECKED BY: William		NO.: 1 OF 1
APPROVED BY: Rio		UNIT: mm
Website: http://www.bocentech.com		DATE: 2021-05-24