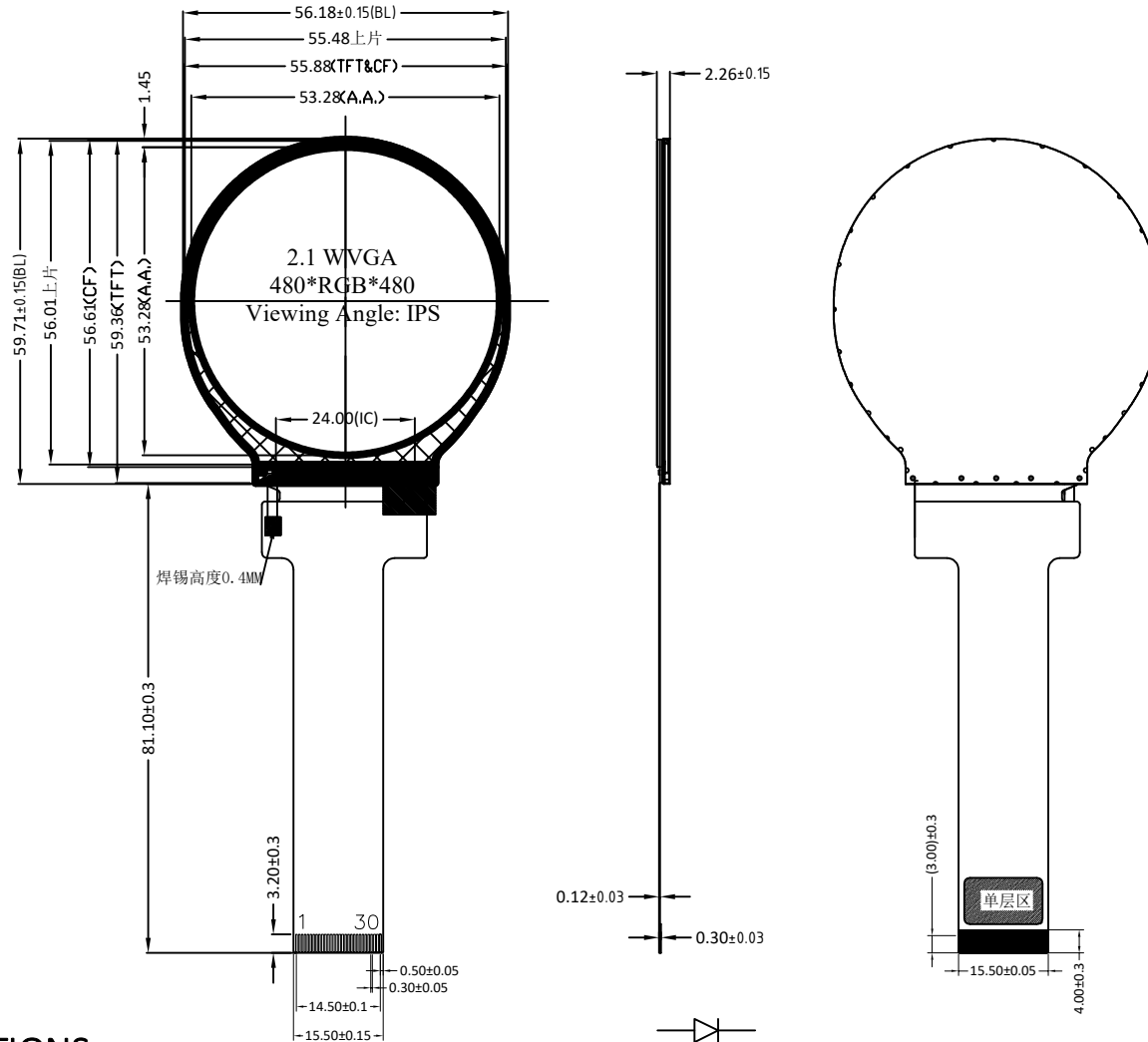


Version

1.0 2022-03-21 New Issue

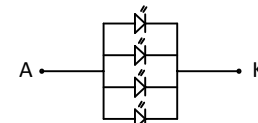


SPECIFICATIONS:

- DISPLAY TYPE: 2.1" / IPS / WVGA
- DRIVE IC: ST7701S
- OPERATING TEMPERATURE: -20 ~ 70°C
- STORAGE TEMPERATURE: -30 ~ 80°C
- VIEWING ANGLE: IPS
- BACKLIGHT: 4LEDs / Parallel / 80mA
- BRIGHTNESS: 320 CD/M² (MIN)
- CUSTOMER PART NO.: BOCEN STANDARD PRODUCT

PIN	SYMBOL
1	2.8V
2	2.8V
3	RESET
4	TE
5	GND
6	TDN0
7	TDPO
8	GND
9	TDN1
10	TDP1
11	GND
12	TCN
13	TCP
14	GND
15	NC
16	NC
17	GND
18	LEDA
19	LEDK
20	LEDK
21	LEDK
22	LEDK
23	1.8V
24	NC
25	NC
26	NC
27	NC
28	NC
29	NC
30	NC

Backlight circuit (4 parallel)



BL drive Vf=12V, If=80mA

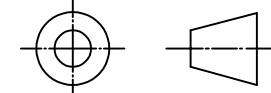
BOCEN DISPLAY TECHNOLOGY CO., LTD.

DESIGNED BY: Sylar

BF2130-01

VERSION: 1.0

CHECKED BY: William



NO.: 1 OF 1

APPROVED BY: Rio

UNIT: mm

Website: <http://www.bocentech.com>

DATE: 2022-03-21