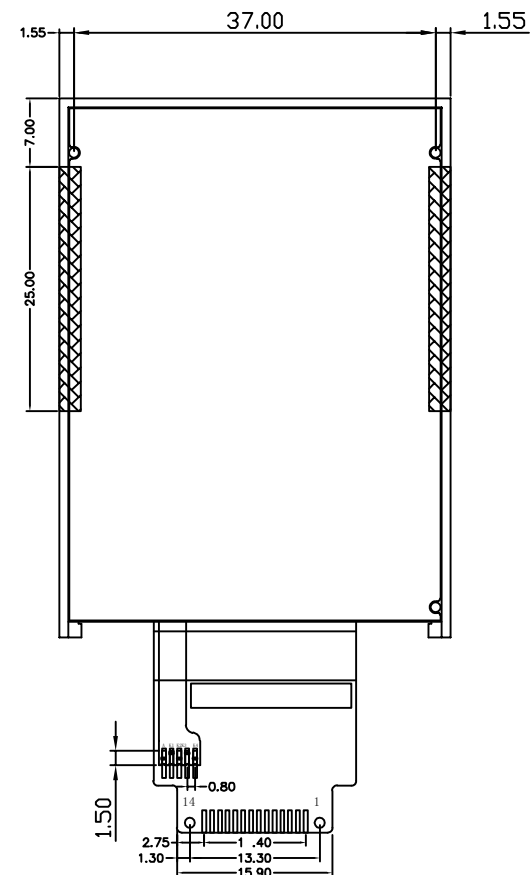
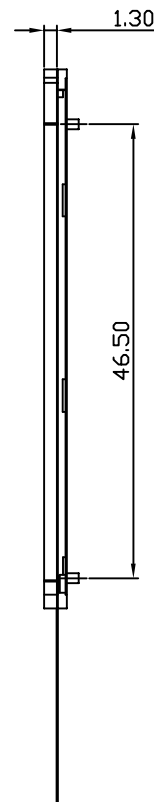
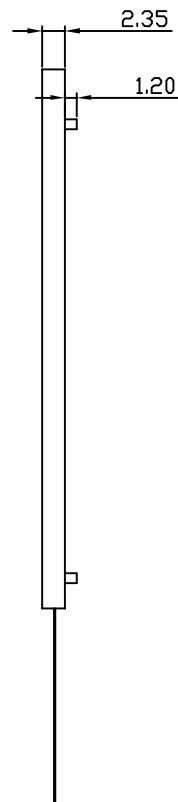
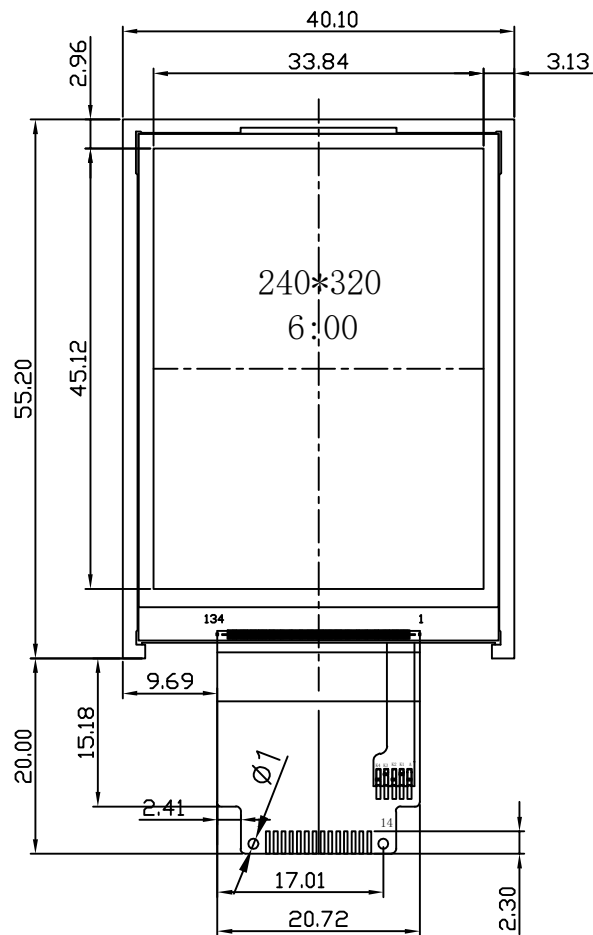


Version

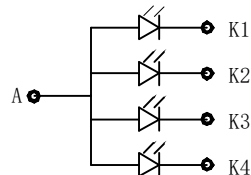
1.0 2018-7-30 New Issue



FPC INTERFACE

1	GND
2	RESET
3	SCL
4	RS
5	CS
6	SDI
7	SDO
8	GND
9	VCC
10	LEDA
11	LEDK1
12	LEDK2
13	LEDK3
14	LEDK4

LED CIRCUIT DIAGRAM:



SPECIFICATIONS:

1. DISPLAY TYPE: 2.2"/ 240*320
2. OPERATING TEMPERATURE: -20 ~ 70°C
3. STORAGE TEMPERATURE: -30 ~ 80°C
4. VIEWING ANGLE: 6 O'CLOCK
5. BACKLIGHT: 4 CHIP - WHITE LED
6. UNSPECIFIED TOLERANCES: ±0.2MM
7. LCD DRIVER: ILI9341V
8. CUSTOMER PART NO.: BOCEN STANDARD PRODUCT

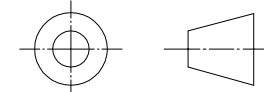
BOCEN DISPLAY TECHNOLOGY CO., LTD.

DESIGNED BY: Shawn

BF2214-02

VERSION: 1.0

CHECKED BY: William



NO.: 1 OF 1

APPROVED BY: Rio

UNIT: mm

Website: <http://www.bocentech.com>

DATE: 2018-7-30