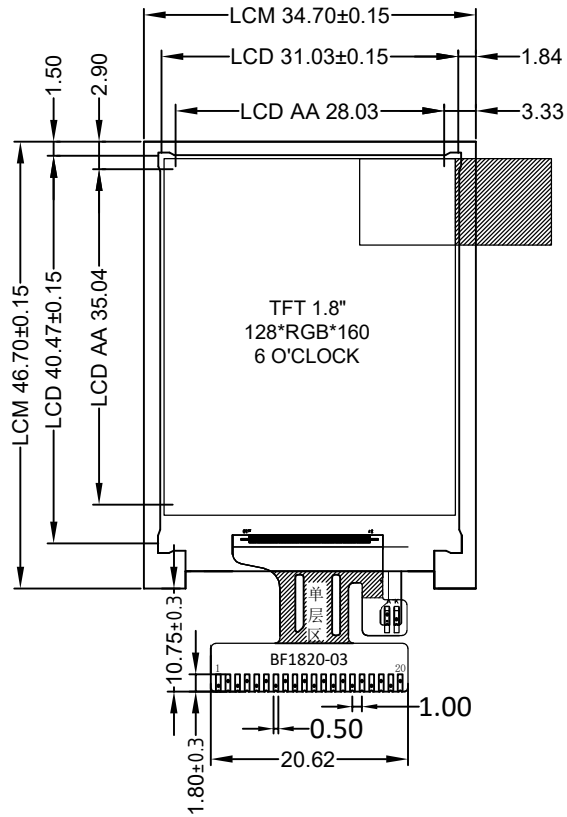
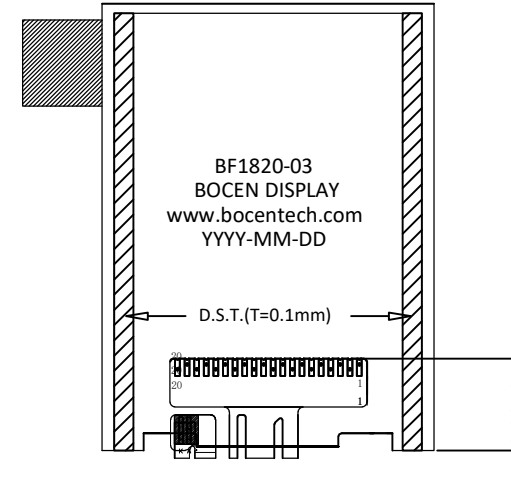
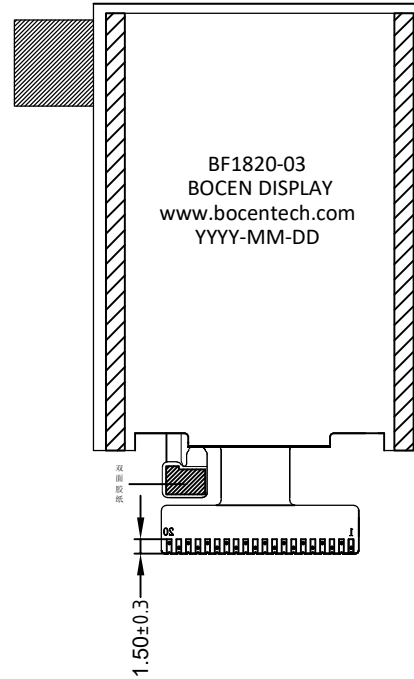


Version

1.0 2022-03-07 New Issue



2.25±0.1(不包含双面胶)

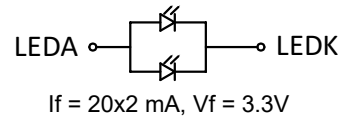
FPC弯折后客户参考图
FPC展开出货

PIN	SYMBOL
1	BL_K
2	BL_A
3	GND
4	VDD
5	IOVCC(1.8/2.8V)
6	TE
7	/CS
8	/RSTB
9	RS
10	WRB
11	RDB
12	DB7
13	DB6
14	DB5
15	DB4
16	DB3
17	DB2
18	DB1
19	DB0
20	GND

SPECIFICATIONS:

- DISPLAY TYPE: 1.8"/ 128*160
- DRIVE IC: GC9107
- OPERATING TEMPERATURE: -20 ~ 70°C
- STORAGE TEMPERATURE: -30 ~ 80°C
- VIEWING ANGLE: 6 O'CLOCK
- BACKLIGHT: 2 WHITE LED, 40mA
- CUSTOMER PART NO.: BOCEN STANDARD PRODUCT

BACKLIGHT CIRCUIT DIAGRAM



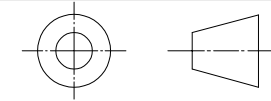
BOCEN DISPLAY TECHNOLOGY CO., LTD.

DESIGNED BY: David

BF1820-03

VERSION: 1.0

CHECKED BY: William



NO.: 1 OF 1

APPROVED BY: Rio

UNIT: mm

Website: <http://www.bocentech.com>

DATE: 2022-03-07