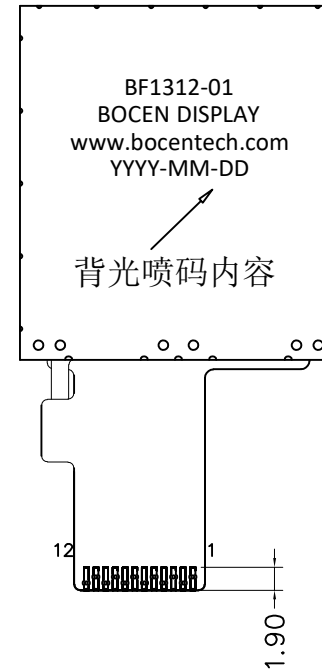
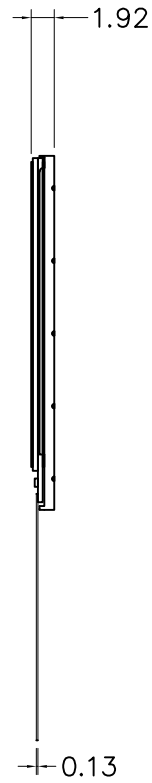
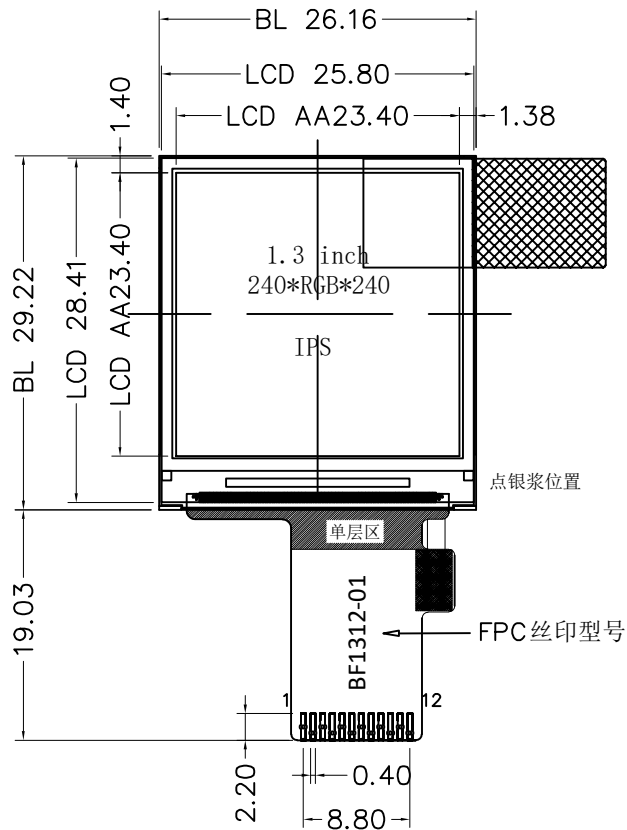


Version	1.0	2011-10-19	New Issue				
---------	-----	------------	-----------	--	--	--	--

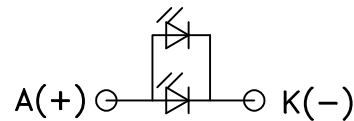


INTERFACE	
1	LEDK
2	LEDA
3	GND
4	VDD 2.8V
5	IOVCC 1.8V
6	CS
7	RESET
8	SCL
9	SDA
10	GND
11	RS
12	GND

SPECIFICATIONS:

- 1. DISPLAY TYPE: 1.3" TFT / IPS / 240x240
- 2. DRIVE IC: ST7789 or EQV.
- 3. OPERATING TEMPERATURE: -20 ~ 70°C
- 4. STORAGE TEMPERATURE: -30 ~ 80°C
- 5. VIEWING ANGLE: All
- 6. BACKLIGHT: 2 LEDs / Parallel /40mA
- 7. CUSTOMER PART NO.: BOCEN STANDARD PRODUCT

LED CIRCUIT DIAGRAM:



BOCEN DISPLAY TECHNOLOGY CO., LTD.

DESIGNED BY: Shawn	BF1312-01A	VERSION: 1.0
CHECKED BY: William		NO.: 1 OF 1
APPROVED BY: Rio		UNIT: mm
Website: http://www.bocentech.com		DATE: 2011-10-19