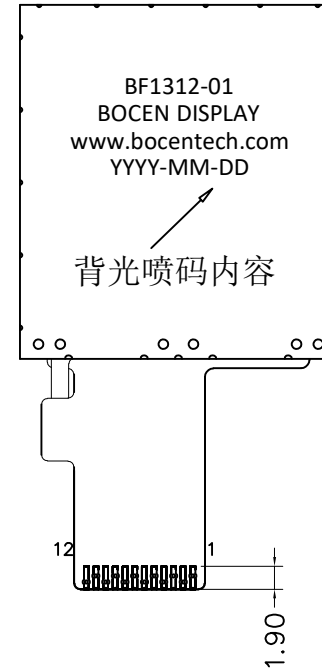
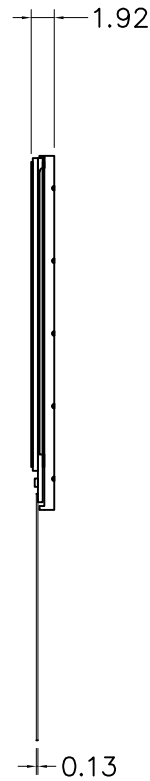
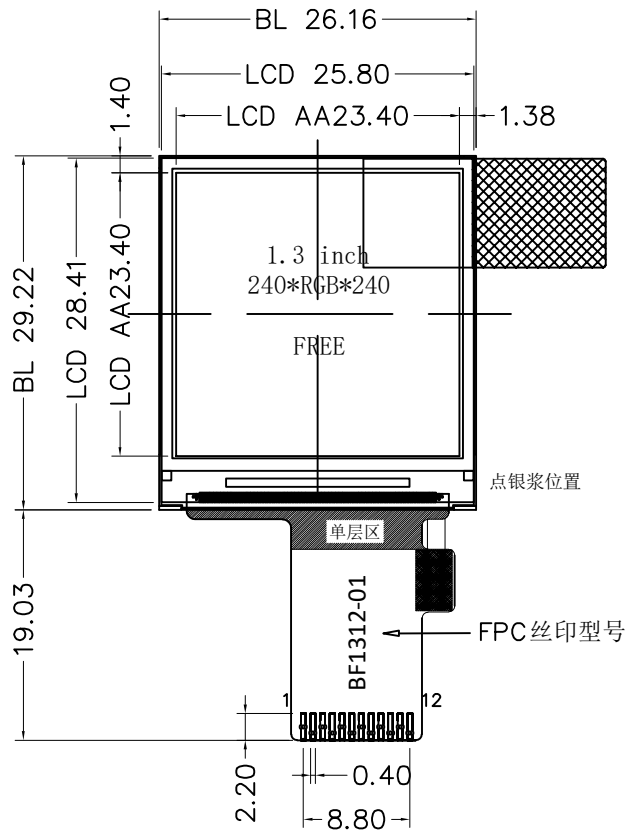


Version	1.0	2011-10-19	New Issue				
---------	-----	------------	-----------	--	--	--	--

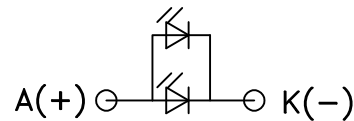


INTERFACE	
1	LEDK
2	LEDA
3	GND
4	VDD 2.8V
5	IOVCC 1.8V
6	CS
7	RESET
8	SCL
9	SDA
10	GND
11	RS
12	GND

SPECIFICATIONS:

- | | |
|---------------------------|--------------------------|
| 1. DISPLAY TYPE: | 1.3" TFT / IPS / 240x240 |
| 2. DRIVE IC: | ST7789V3 or EQV. |
| 3. OPERATING TEMPERATURE: | -20 ~ 70°C |
| 4. STORAGE TEMPERATURE: | -30 ~ 80°C |
| 5. VIEWING ANGLE: | All |
| 6. BACKLIGHT: | 2 LEDs / Parallel /40mA |
| 7. CUSTOMER PART NO.: | BOCEN STANDARD PRODUCT |

LED CIRCUIT DIAGRAM:



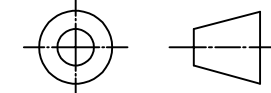
BOCEN DISPLAY TECHNOLOGY CO., LTD.

DESIGNED BY: Shawn

BF1312-01

VERSION: 1.0

CHECKED BY: William



NO.: 1 OF 1

APPROVED BY: Rio

UNIT: mm

Website: <http://www.bocentech.com>

DATE: 2011-10-19