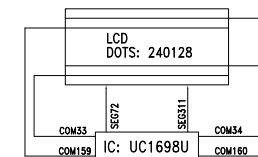
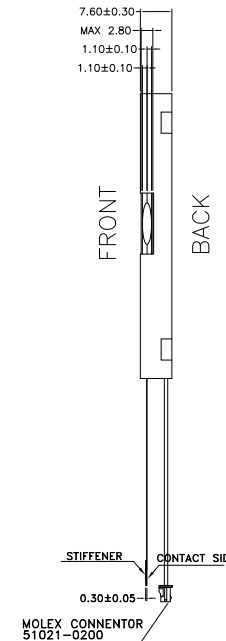


BG240128-08
XXXX-XX-XX
www.bocentech.com

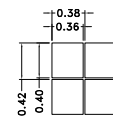
Dots: 240*128
Viewing Direction

PIN	SYMBOL
1	NC
2	D7
3	D6
4	D5
5	D4
6	D3
7	D2
8	D1
9	D0
10	RST
11	WR0
12	WR1
13	CD
14	CS0
15	BMO
16	BM1
17	TST4
18	VSS
19	VDD
20	VB0+
21	VB1+
22	VB1-
23	VB0-
24	VS-
25	VS+
26	VLCDIN
27	VLCDOUT
28	NC

请仔细确认COM/SEG LAYOUT



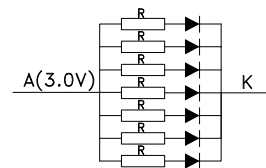
COM & SEG LAYOUT



DOTS SIDE SCALE 20:1

SPECIFICATIONS:

- | | |
|---------------------------|---------------------------------|
| 1. DISPLAY TYPE: | FSTN / POSITIVE / TRANSFLECTIVE |
| 2. DRIVE IC: | UC1698UGAC |
| 3. OPERATING VOLTAGE: | Vdd=3.3V; Vlcd=14.0V |
| 4. OPERATING TEMPERATURE: | -20°C ~ +70°C |
| 5. STORAGE TEMPERATURE: | -30°C ~+ 80°C |
| 6. DRIVE MODE: | 1/128 DUTY, 1/12 BIAS |
| 7. VIEWING ANGLE: | 6 O'CLOCK |
| 8. BACKLIGHT: | 7pcs WHITE LED 3.0V,105mA |
| 9. CUSTOMER PART NO.: | BOCEN STANDARD PRODUCT |



BACKLIGHT CIRCUIT

BOCEN DISPLAY TECHNOLOGY CO., LTD.

DESIGNED BY: Sylar	BG240128-08	VERSION: 1.0
CHECKED BY: William		NO.: 1 OF 1
APPROVED BY: Rio		UNIT: mm
Website: http://www.bocentech.com		DATE: 2018-04-23