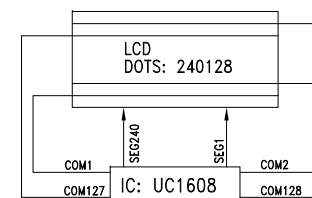
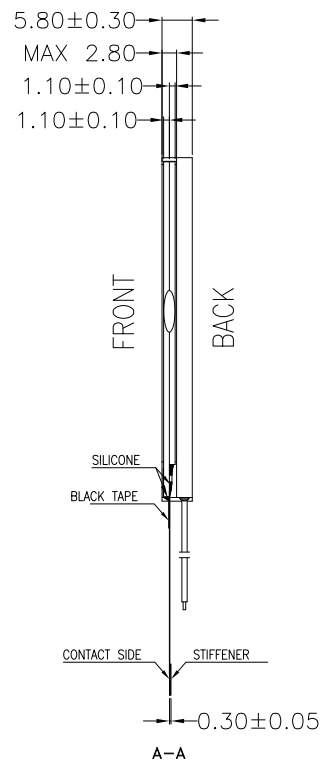
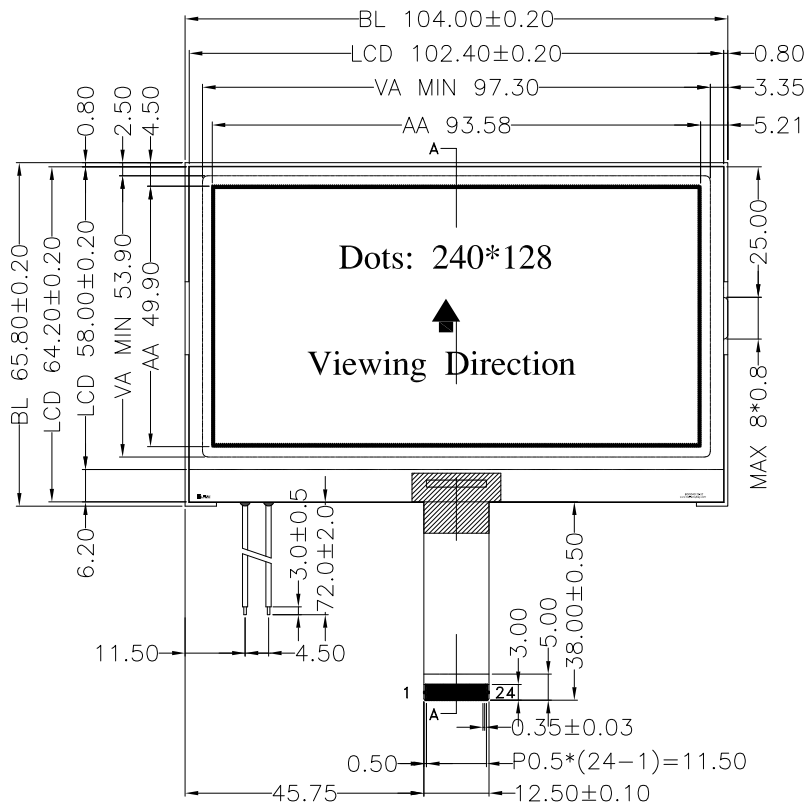
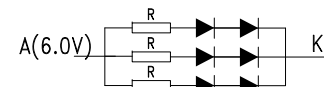


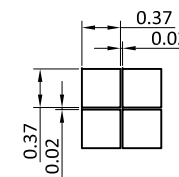
Version	1.0	2016-10-10	New Issue



COM & SEG LAYOUT



BACKLIGHT CIRCUIT



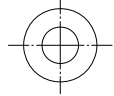
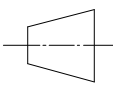
DOTS SIDE SCALE 20:1

PIN	SYMBOL
1	BM1
2	BM0
3	CS
4	RST
5	CD
6	WR0
7	WR1
8	D0
9	D1
10	D2
11	D3
12	D4
13	D5
14	D6
15	D7
16	VDD
17	VSS
18	VB AIS
19	VLCD
20	VB0+
21	VB0-
22	VB1+
23	VB1-
24	NC

SPECIFICATIONS:

- DISPLAY TYPE: FSTN / POSITIVE / TRANSFLECTIVE
- DRIVE IC: UC1608
- OPERATING VOLTAGE: Vdd=3.0V; Vop=14V
- OPERATING TEMPERATURE: -20°C ~ +70°C
- STORAGE TEMPERATURE: -30°C ~+ 80°C
- DRIVE MODE: 1/128 DUTY, 1/12 BIAS
- VIEWING ANGLE: 6 O'CLOCK
- BACKLIGHT: 6 PCS White LED; If=4mA; VF=6.0V
- CUSTOMER PART NO.: BOCEN STANDARD PRODUCT

BOCEN DISPLAY TECHNOLOGY CO., LTD.

DESIGNED BY: Shawn	BG240128-02	VERSION: 1.0
CHECKED BY: William		NO.: 1 OF 1
APPROVED BY: Rio		UNIT: mm
Website: http://www.bocentech.com		DATE: 2016-10-10