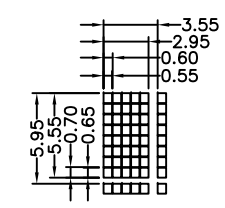
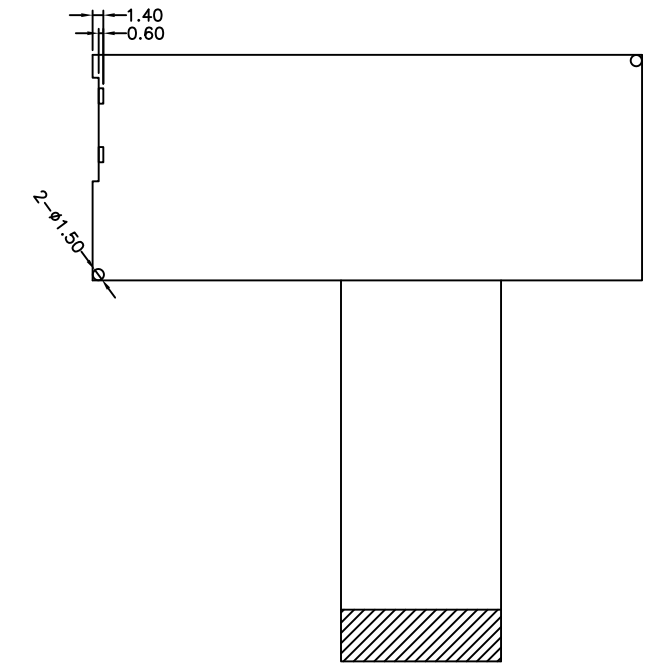
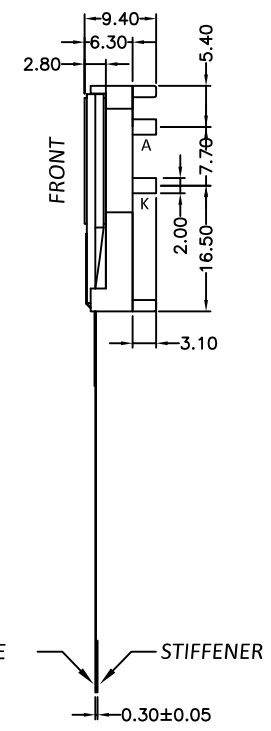
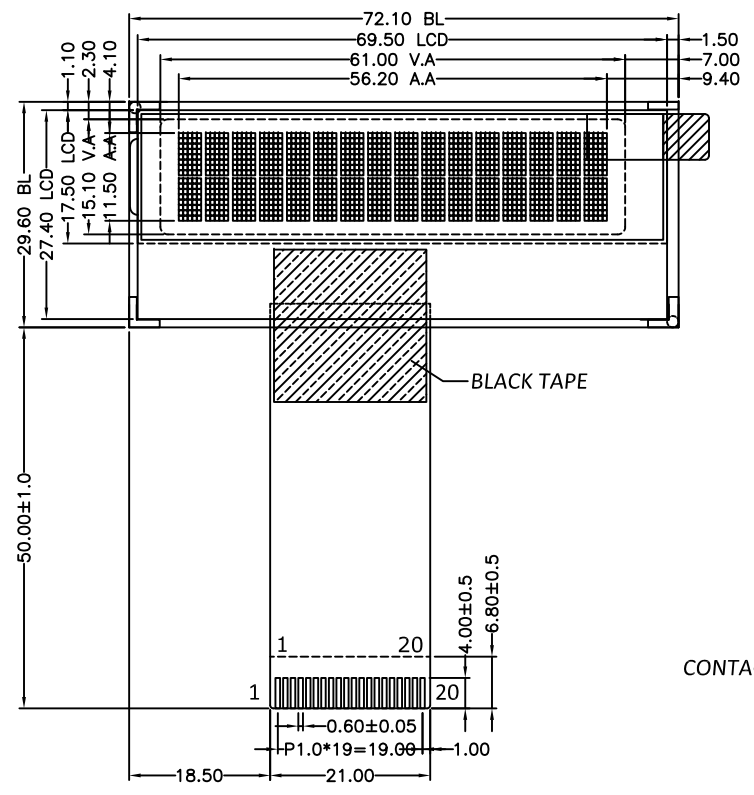
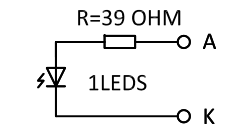


Version	1.0	2019-04-26	New Issue				
---------	-----	------------	-----------	--	--	--	--



DOTS SIZE (2:1)

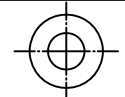
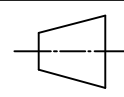


BackLight Circuit

PIN	SYMBOL
1	RS
2	RW
3	E
4	DB0
5	DB1
6	DB2
7	DB3
8	DB4
9	DB5
10	DB6
11	DB7
12	VSS
13	VDD
14	VOUT
15	PSB
16	PSI2B
17	CAP1P
18	CAP1N
19	VOUT
20	V0

SPECIFICATIONS:

- 1. DISPLAY TYPE: FSTN / POSITIVE / TRANSFLECTIVE
- 2. DRIVE IC: ST7032i or AIP31032
- 3. OPERATING VOLTAGE: Vop=4.5 Vdd=3.3V
- 4. OPERATING TEMPERATURE: -20°C ~ +70°C
- 5. STORAGE TEMPERATURE: -30°C ~+80°C
- 6. DRIVE MODE: 1/16 DUTY, 1/5 BIAS
- 7. VIEWING ANGLE: 6 O'CLOCK
- 8. BACKLIGHT: 1PCS WHITE LED, 15mA, 3.0V
- 9. CUSTOMER PART NO.: BOCEN STANDARD PRODUCT

BOCEN DISPLAY TECHNOLOGY CO., LTD.		
DESIGNED BY: Shawn	BG1602-15	VERSION: 1.0
CHECKED BY: William	 	NO.: 1 OF 3
APPROVED BY: Rio		UNIT: mm
Website: http://www.bocentech.com		DATE: 2019-04-26