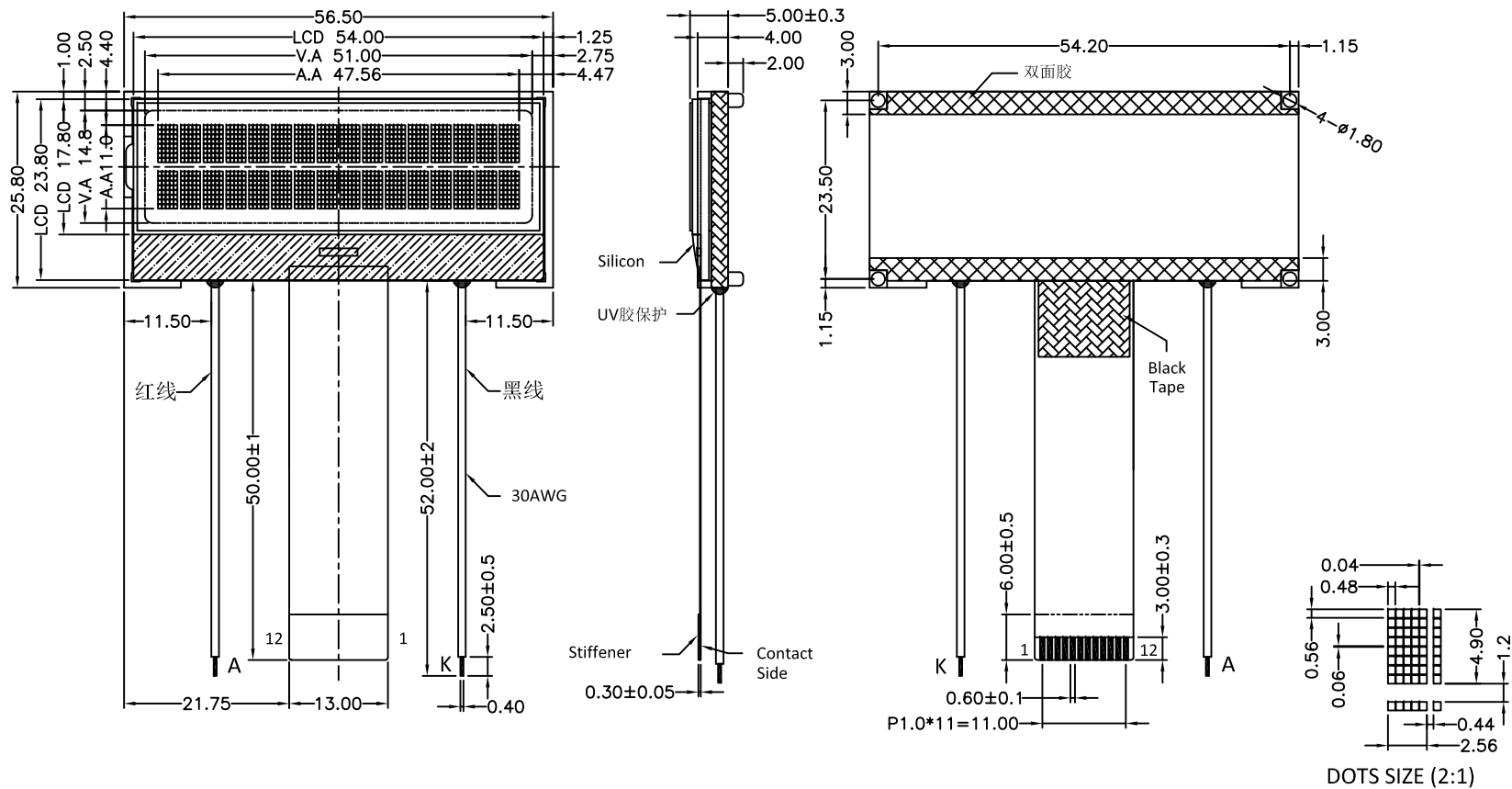


Version

1.0 2017-01-18 New Issue



PIN	SYMBOL
1	XRESTE
2	DB6
3	DB7
4	VSS
5	DIRC
6	SHL
7	VDD
8	VIN
9	VOUT
10	CAP1P
11	CAP1N
12	NC

SPECIFICATIONS:

- DISPLAY TYPE: STN / BLUE / NEGATIVE / TRANSMISSIVE
- DRIVE IC: SPLC792A-002A
- OPERATING VOLTAGE: $V_{lcd}=5.6V$; $V_{dd}=3.3V$
- OPERATING TEMPERATURE: $0^{\circ}C \sim +50^{\circ}C$
- STORAGE TEMPERATURE: $-10^{\circ}C \sim +60^{\circ}C$
- DRIVE MODE: 1/16 DUTY, 1/5 BIAS
- BACKLIGHT: 3PCS WHITE LED $I_F=45mA$; $V_F=3.0V$
- VIEWING ANGLE: 12 O'CLOCK
- CUSTOMER PART NO.: BOCEN STANDARD PRODUCT

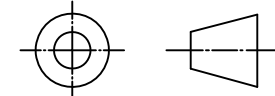
BOCEN DISPLAY TECHNOLOGY CO., LTD.

DESIGNED BY: Shawn

BG1602-06

VERSION: 1.0

CHECKED BY: William



NO.: 1 OF 3

APPROVED BY: Rio

UNIT: mm

Website: <http://www.bocentech.com>

DATE: 2017-01-18