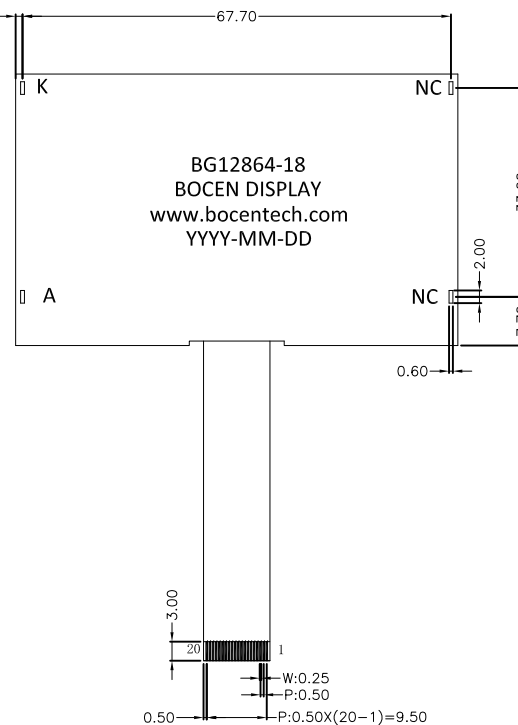
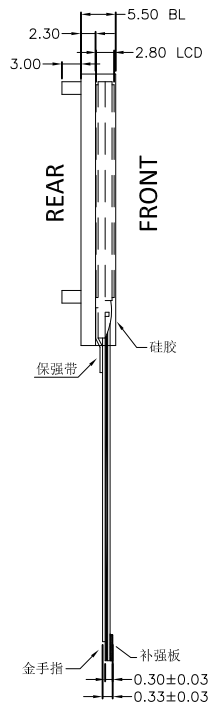
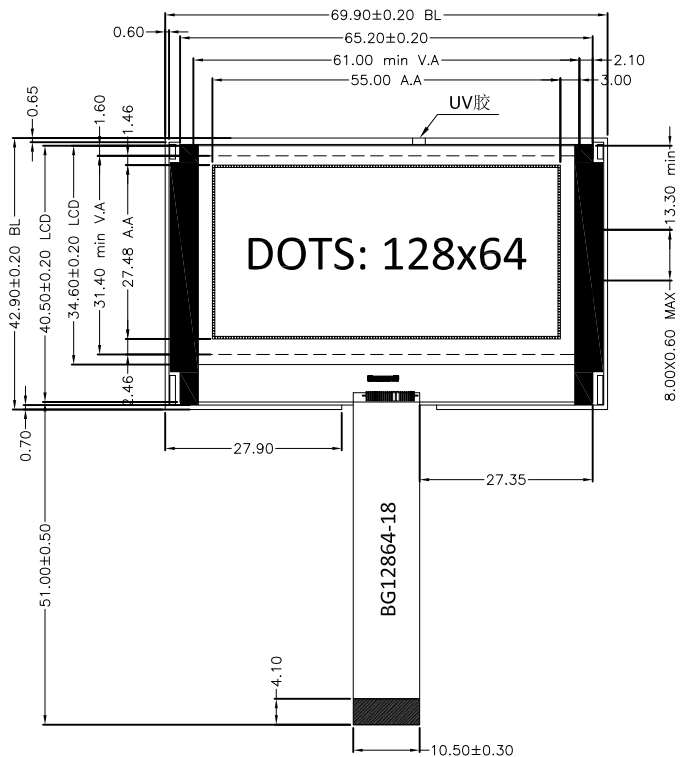
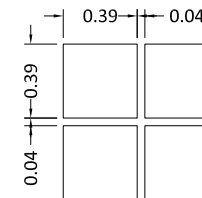


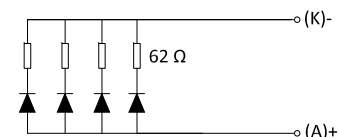
Version	1.0	2021-1-20	New Issue



DOTS SIZE:



BACKLIGHT CIRCUIT:



PIN	SYMBOL
1	NC
2	NC
3	NC
4	NC
5	NC
6	VG
7	NC
8	NC
9	XV0
10	VO
11	NC
12	NC
13	VSS
14	VDD
15	SDA
16	SCLK
17	A0
18	RSTB
19	CSB
20	NC

## SPECIFICATIONS:

- |                           |   |
|---------------------------|---|
| 1. DISPLAY TYPE:          | FSTN / POSITIVE / TRANFLECTIVE          |
| 2. DRIVE IC:              | SC5250-G4 or EQV.                       |
| 3. CONNECTOR:             | FLEX CABLE                              |
| 4. LCM OPERATING VOLTAGE: | 3.0V                                    |
| 5. OPERATING TEMPERATURE: | -20 ~ 70°C                              |
| 6. STORAGE TEMPERATURE:   | -30 ~ 80°C                              |
| 7. DRIVE MODE:            | 1/65 DUTY, 1/9 BIAS                     |
| 8. VIEWING ANGLE:         | 6 O'CLOCK                               |
| 9. BACKLIGHT:             | WHITE LED 4 PCS, Vf=4.0±0.2V, If = 60mA |
| 10. TOLERANCE NOT STATED: | ±0.20 MM                                |
| 11. CUSTOMER PART NO.:    | BOCEN STANDARD PRODUCT (ROHS)           |

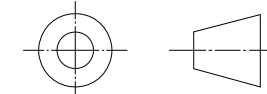
## BOCEN DISPLAY TECHNOLOGY CO., LTD.

DESIGNED BY: Shawn

**BG12864-18**

VERSION: 1.0

CHECKED BY: William



NO.: 1 OF 1

APPROVED BY: Rio

UNIT: mm

Website: <http://www.bocentech.com>

DATE: 2021-1-20