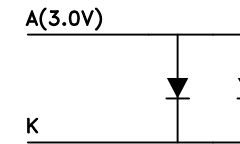
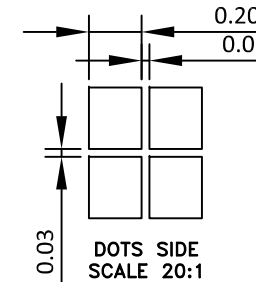


LCD LAYOUT



BACKLIGHT CIRCUIT
2PCS WHITE LEDS

PIN	SYMBOL
1	LED+
2	LED-
3	VG
4	XV0
5	V0
6	VSS
7	VDD
8	D7(SDA)
9	D6(SCL)
10	A0
11	RST
12	CSB

SPECIFICATIONS:

- | | |
|---------------------------|----------------------------------|
| 1. DISPLAY TYPE: | DSTN / NEGATIVE / TRANSMISSIVE |
| 2. DRIVE IC: | ST7567 |
| 3. OPERATING VOLTAGE: | Vop=5.8V; Vdd=3.3V |
| 4. OPERATING TEMPERATURE: | -10°C ~ +60°C |
| 5. STORAGE TEMPERATURE: | -20°C ~ +70°C |
| 6. DRIVE MODE: | 1/33DUTY, 1/6BIAS |
| 7. BACKLIGHT: | 2PCS WHITE LED, IF=30mA. VF=3.0V |
| 8. VIEWING ANGLE: | 6 O'CLOCK |
| 9. CUSTOMER PART NO.: | BOCEN STANDARD PRODUCT |

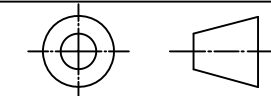
BOCEN DISPLAY TECHNOLOGY CO., LTD.

DESIGNED BY: Shawn

BG12832-16

VERSION: 1.0

CHECKED BY: William



NO.: 1 OF 3

APPROVED BY: Rio

UNIT: mm

Website: <http://www.bocentech.com>

DATE: 2016-11-03