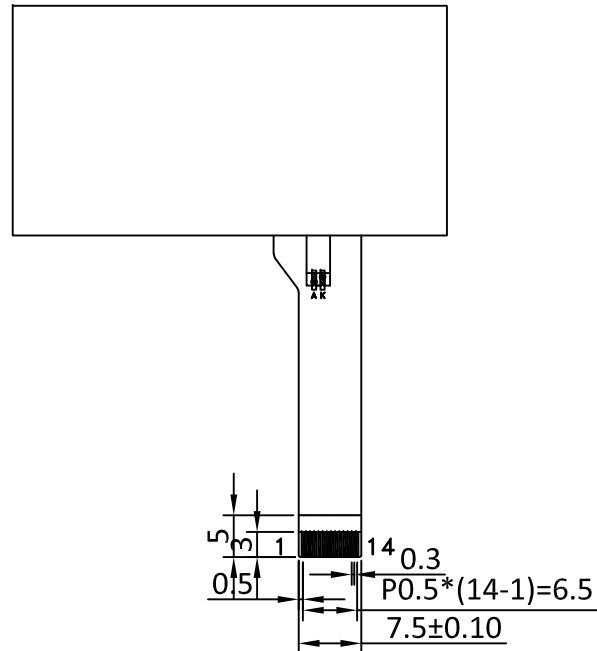
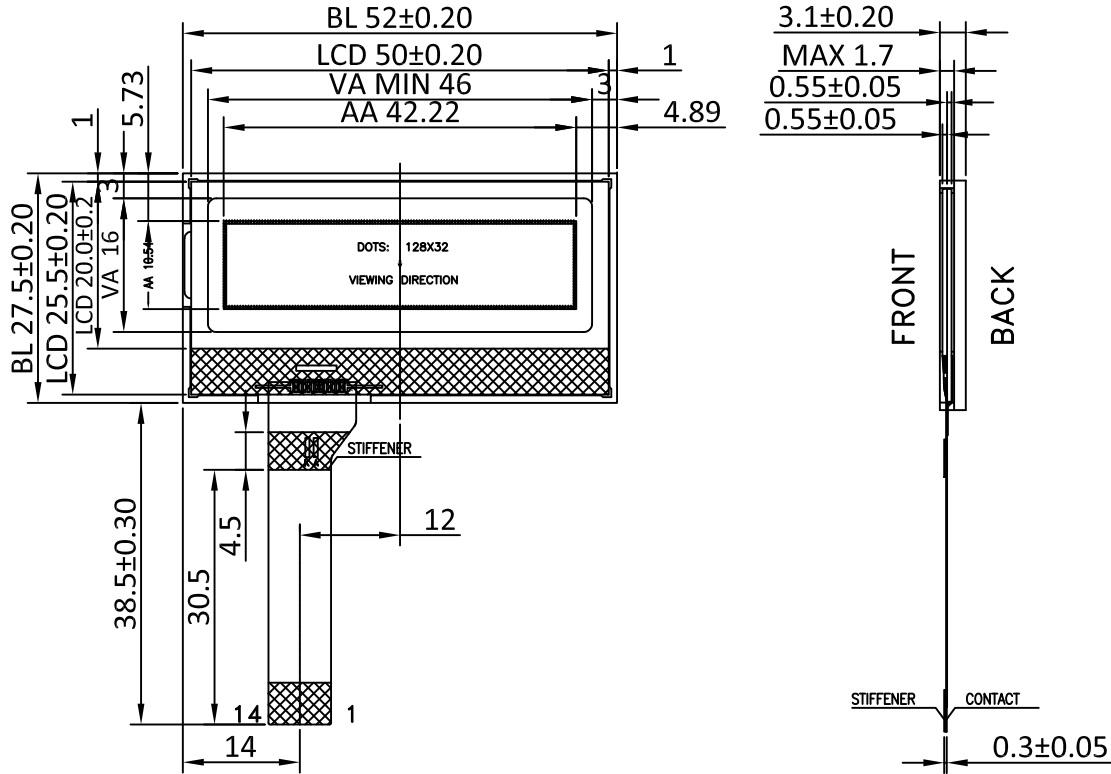
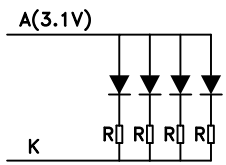


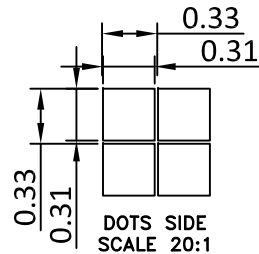
Revised Record	1.0	2021-05-25	New Issue				



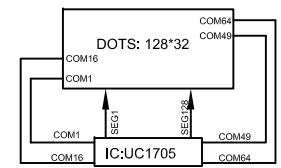
PIN	SYMBOL
1	A
2	K
3	CS0
4	RST
5	CD
6	SCK
7	SDA
8	VDD
9	VSS
10	VB0+
11	VB0-
12	VB1-
13	VB1+
14	VLCD



BACKLIGHT CIRCUIT  
4PCS WHITE LEDS



DOTS SIDE  
SCALE 20:1



LCD LAYOUT

**SPECIFICATIONS:**

- |                           |                                  |
|---------------------------|----------------------------------|
| 1. DISPLAY TYPE:          | FSTN / POSITIVE / TRANSFLECTIVE  |
| 2. DRIVE IC:              | UC1705                           |
| 3. OPERATING VOLTAGE:     | Vop=9.10V; Vdd=3.3V              |
| 4. OPERATING TEMPERATURE: | 0°C ~ +50°C                      |
| 5. STORAGE TEMPERATURE:   | -20°C ~ +70°C                    |
| 6. DRIVE MODE:            | 1/33DUTY, 1/6BIAS                |
| 7. BACKLIGHT:             | 4PCS WHITE LED, IF=60mA, VF=3.0V |
| 8. VIEWING ANGLE:         | 12 O'CLOCK                       |
| 9. CUSTOMER PART NO.:     | BOCEN STANDARD PRODUCT           |

<b>BOCEN DISPLAY TECHNOLOGY CO., LTD.</b>		
DESIGNED BY: Shawn	<b>BG12832-13</b>	VERSION: 1.0
CHECKED BY: William		NO.: 1 OF 3
APPROVED BY: Rio		UNIT: mm
Website: <a href="http://www.bocentech.com">http://www.bocentech.com</a>		DATE: 2021-05-25