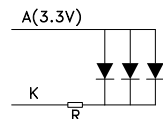


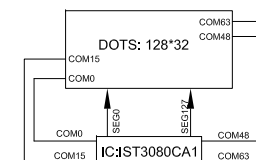
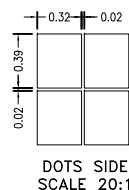
PIN	SYMBOL	PIN	SYMBOL
1	/CS	15	NC
2	/RST	16	NC
3	A0	17	NC
4	/WR	18	NC
5	/RD	19	NC
6	D0	20	NC
7	D1	21	NC
8	D2	22	NC
9	D3	23	NC
10	D4	24	NC
11	D5	25	VO
12	D6	26	C86
13	D7	27	P/S
14	VSS	28	VDD

SPECIFICATIONS:

- | | |
|---------------------------|----------------------------------|
| 1. DISPLAY TYPE: | FSTN / POSITIVE / TRANSFLECTIVE |
| 2. DRIVE IC: | IST3080CA1 |
| 3. OPERATING VOLTAGE: | Vop=7.6V; Vdd=3.0V |
| 4. OPERATING TEMPERATURE: | -10°C ~ +60°C |
| 5. STORAGE TEMPERATURE: | -20°C ~ +70°C |
| 6. DRIVE MODE: | 1/33DUTY, 1/6BIAS |
| 7. BACKLIGHT: | 3PCS WHITE LED, IF=45mA, VF=3.3V |
| 8. VIEWING ANGLE: | 6 O'CLOCK |
| 9. CUSTOMER PART NO.: | BOCEN STANDARD PRODUCT |



BACKLIGHT CIRCUIT
3PCS WHITE LEDS



LCD LAYOUT

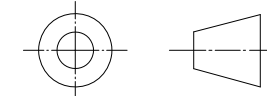
BOCEN DISPLAY TECHNOLOGY CO., LTD.

DESIGNED BY: Shawn

BG12832-03

VERSION: 1.0

CHECKED BY: William



NO.: 1 OF 1

APPROVED BY: Rio

UNIT: mm

Website: <http://www.bocentech.com>

DATE: 2015-05-16