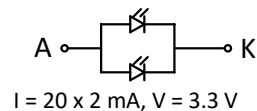


| PIN | SYMBOL |
|-----|--------|
| 1   | D/C    |
| 2   | NC     |
| 3   | GND    |
| 4   | VDD    |
| 5   | CS     |
| 6   | SDA    |
| 7   | SCK    |
| 8   | RESET  |
| 9   | LEDA   |
| 10  | LEDK   |

### SPECIFICATIONS:

- 1. DISPLAY TYPE: 1.8" / 128\*160
- 2. DRIVE IC: ST7735S
- 3. OPERATING TEMPERATURE: -20 ~ 70°C
- 4. STORAGE TEMPERATURE: -30 ~ 80°C
- 5. VIEWING ANGLE: 12 O'CLOCK
- 6. BACKLIGHT: 2 WHITE LED, 40mA
- 7. CUSTOMER PART NO.: BOCEN STANDARD PRODUCT

BACKLIGHT CIRCUIT DIAGRAM



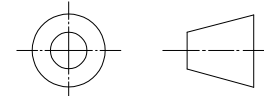
## BOCEN DISPLAY TECHNOLOGY CO., LTD.

DESIGNED BY: David

**BF1810-01**

VERSION: 1.0

CHECKED BY: William



NO.: 1 OF 1

APPROVED BY: Rio

UNIT: mm

Website: <http://www.bocentech.com>

DATE: 2022-02-18