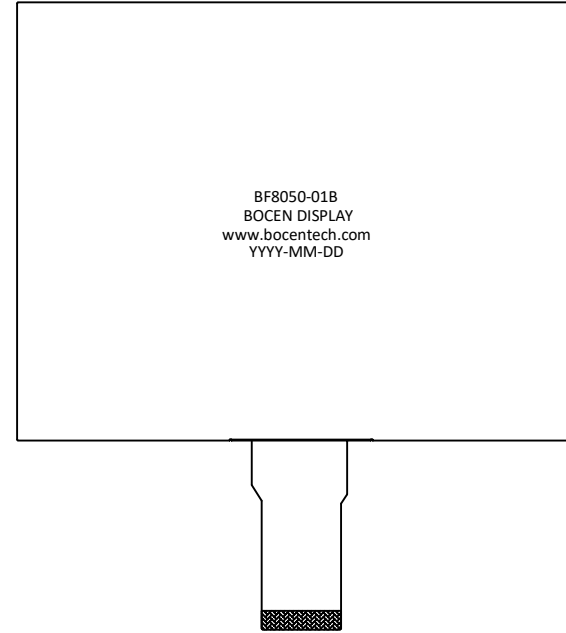
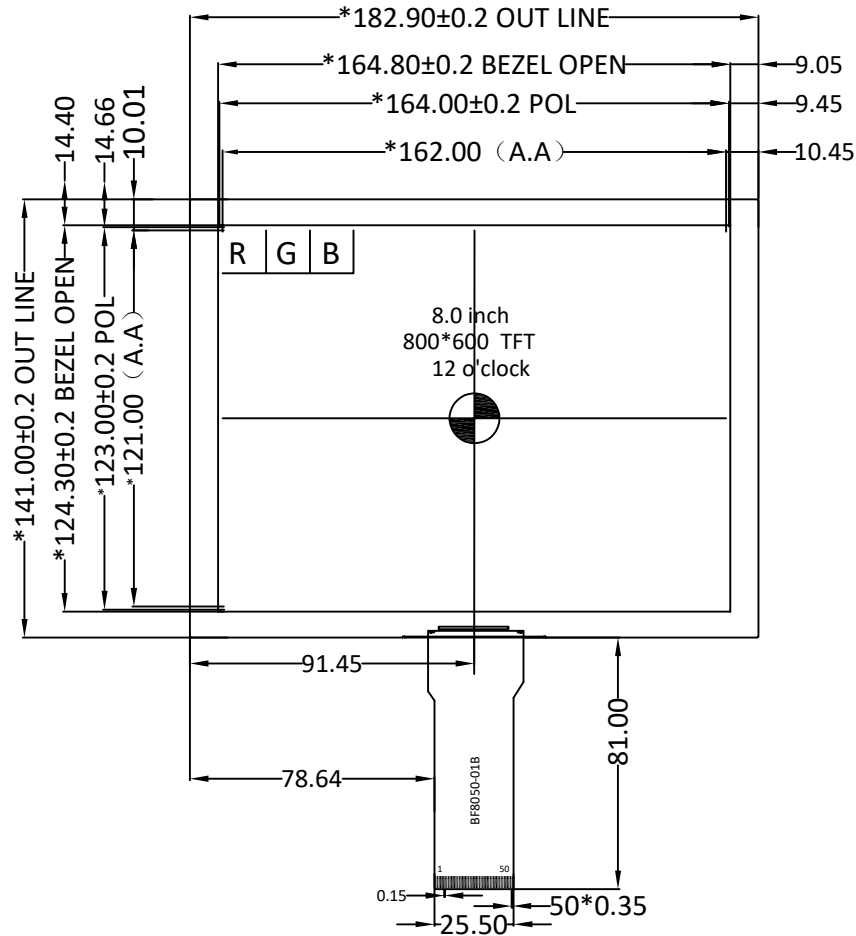


Version

1.0

2023-4-17

New Issue

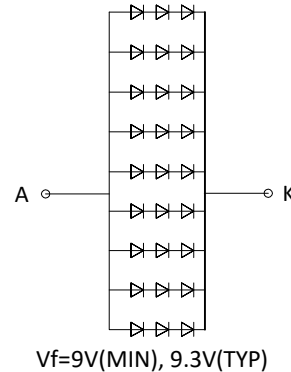


PIN	SYMBOL
1~2	VBL+
3~4	VBL-
5	GND
6	VCOM
7	VDD
8	MODE
9	DE
10	VSYNC
11	HSYNC
12~19	B7~B0
20~27	G7~G0
28~35	R7~R0
36	GND
37	DCLK
38	GND
39	SHLR
40	UDDN
41	VGH
42	VGL
43	AVDD
44	RESET
45	NC
46	VCOM
47	DITHB
48	GND
49~50	NC

SPECIFICATIONS:

- DISPLAY TYPE: 8.0"/ 800*600
- OPERATING TEMPERATURE: -20 ~ 60°C
- STORAGE TEMPERATURE: -30 ~ 70°C
- VIEWING ANGLE: 12 O' CLOCK
- DRIVE IC: HX8264D02, HX8696
- BACKLIGHT: 27 WHITE LED, $I_f=180\text{mA}$
- BRIGHTNESS: 360 CD/M² (TYP)
- CUSTOMER PART NO.: BOCEN STANDARD PRODUCT

BACKLIGHT CIRCUIT DIAGRAM



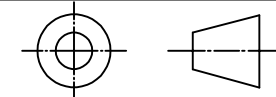
BOCEN DISPLAY TECHNOLOGY CO., LTD.

DESIGNED BY: David

BF8050-01B

VERSION: 1.0

CHECKED BY: William



NO.: 1 OF 1

APPROVED BY: Rio

UNIT: mm

Website: <http://www.bocentech.com>

DATE: 2023-4-17