

PIN	SYMBOL
1	LEDA
2	LEDA
3	LEDK
4	LEDK
5	GND
6	RESET
7	SPENA
8	SPCK
9	SPDA
10	D0
11	D01
12	D02
13	D03
14	D04
15	D05
16	D06
17	D07
18	D08
19	D09
20	D10
21	D11
22	D12
23	D13
24	D14
25	D15
26	D16
27	D17
28	D18
29	D19
30	D20
31	D21
32	D22
33	D23
34	HSYNC
35	VSYNC
36	CLK
37	DEN
38	VCI
39	IOVCC
40	GND

SPECIFICATIONS:

- | | |
|---------------------------|--------------------------|
| 1. DISPLAY TYPE: | 4.0" TFT / IPS / 480*800 |
| 2. DRIVE IC: | ST7701 |
| 3. OPERATING TEMPERATURE: | -20 ~ 70°C |
| 4. STORAGE TEMPERATURE: | -30 ~ 80°C |
| 5. BACKLIGHT: | 8 WHITE LED, If = 40mA |
| 6. CUSTOMER PART NO.: | BOCEN STANDARD PRODUCT |

BACKLIGHT LED CIRCUIT DIAGRAM



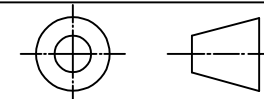
BOCEN DISPLAY TECHNOLOGY CO., LTD.

DESIGNED BY: David

BF4040-05

VERSION: 1.0

CHECKED BY: William



NO.: 1 OF 1

APPROVED BY: Rio

UNIT: mm

Website: <http://www.bocentech.com>

DATE: 2021-5-17