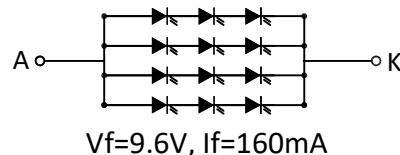


PIN	SYMBOL
1	GND
2	NC
3	LEDA
4	LEDA
5	NC
6	LEDK
7	LEDK
8	NC
9	GND
10	NC
11	VCI
12	NC
13	NC
14	NC
15	NC
16	NC
17	GND
18	NC
19	GND
20	GND
21	RST
22	IOVCC
23	NC
24	NC
25	GND
26	D0P
27	D0N
28	GND
29	D1P
30	D1N
31	GND
32	CLKP
33	CLKN
34	GND
35	D2P
36	D2N
37	GND
38	D3P
39	D3N
40	GND

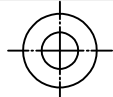
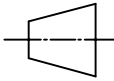
SPECIFICATIONS:

- | | |
|---------------------------|------------------------|
| 1. DISPLAY TYPE: | 6.86" / IPS / 480*1280 |
| 2. DRIVE IC: | NV3051F1 |
| 3. OPERATING TEMPERATURE: | -20 ~ 70°C |
| 4. STORAGE TEMPERATURE: | -30 ~ 80°C |
| 5. VIEWING ANGLE: | IPS |
| 6. BACKLIGHT: | 12 WHITE LED, 160MA |
| 7. GENERAL TOLERANCE: | ±0.2 MM |
| 8. CUSTOMER PART NO.: | BOCEN STANDARD PRODUCT |

Backlight Circuit



BOCEN DISPLAY TECHNOLOGY CO., LTD.

DESIGNED BY: Shawn	BF68640-03	VERSION: 1.0
CHECKED BY: William	 	NO.: 1 OF 1
APPROVED BY: Rio		UNIT: mm
Website: http://www.bocentech.com		DATE: 2022-9-6