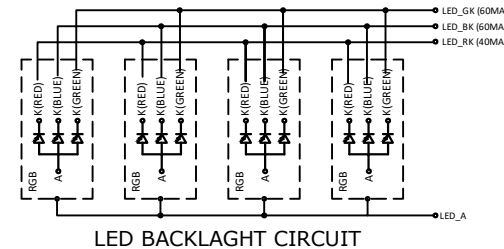
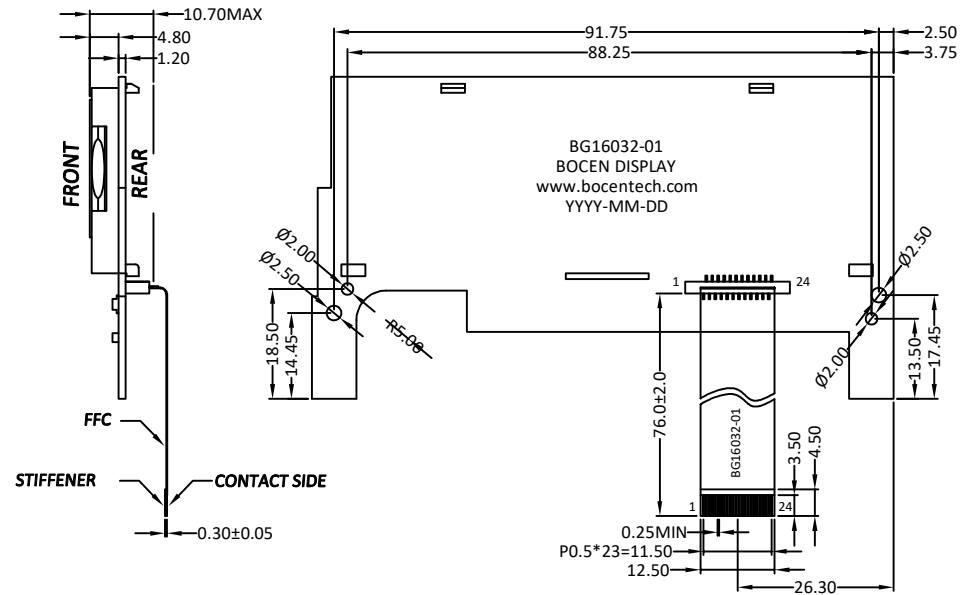
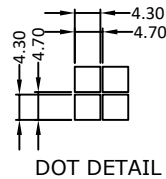
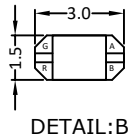
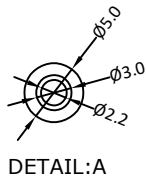
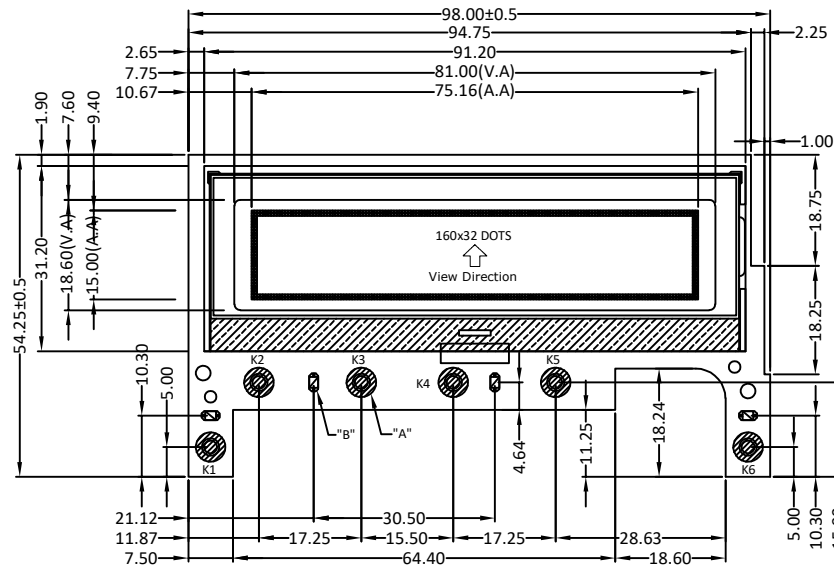


Version

1.0

2022-8-23

New Issue



PIN	SYMBOL
1	VSS
2	VDD
3	V0
4	RS
5	R/W
6	E
7	DB0
8	DB1
9	DB2
10	DB3
11	DB4
12	DB5
13	DB6
14	DB7
15	LED-R
16	VSS
17	KN1
18	KN2
19	KN3
20	KN4
21	KN5
22	KN6
23	LED-G
24	LED-B

SPECIFICATIONS:

- DISPLAY TYPE: FSTN / POSITIVE / TRANFLECTIVE
- DRIVE IC: ST7525 or EQV.
- CONNECTOR: FLEX CABLE
- OPERATING VOLTAGE: VOP = 7.0±0.2V, VDD = 5.0V
- OPERATING TEMPERATURE: -20 ~ 70°C
- STORAGE TEMPERATURE: -30 ~ 80°C
- DRIVE MODE: 1/32 DUTY, 1/6 BIAS
- VIEWING ANGLE: 6 O'CLOCK
- BACKLIGHT: 4 PCS RGB LED, Vf = 5.0V, If = 60mA
- CUSTOMER PART NO.: BOCEN STANDARD PRODUCT

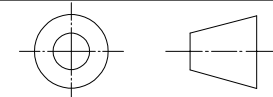
BOCEN DISPLAY TECHNOLOGY CO., LTD.

DESIGNED BY: Shawn

BG16032-01

VERSION: 1.0

CHECKED BY: William



NO.: 1 OF 1

APPROVED BY: Rio

UNIT: mm

Website: <http://www.bocentech.com>

DATE: 2022-8-23