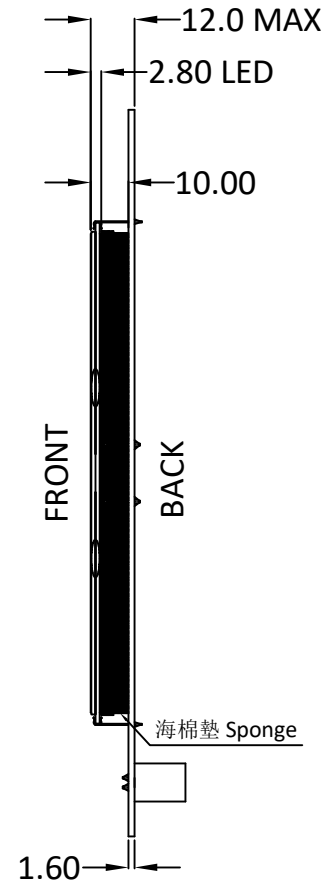
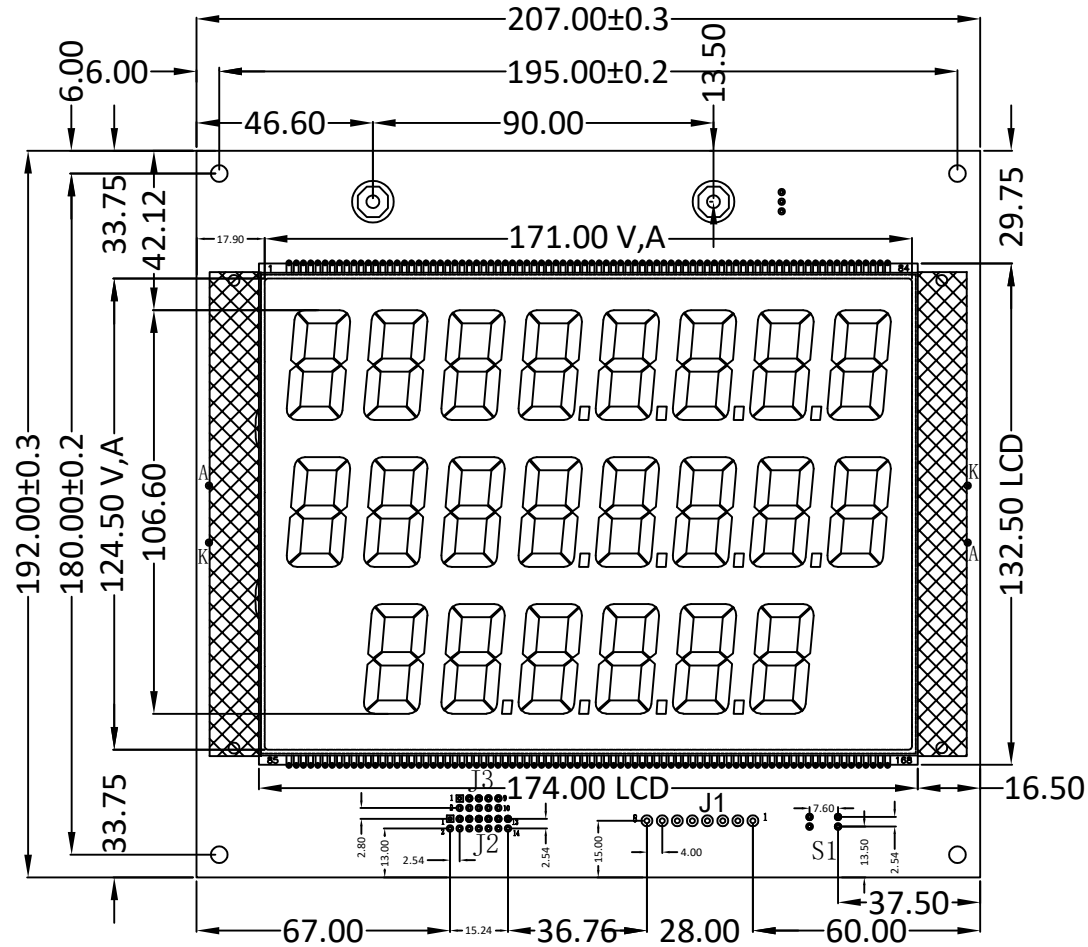


Version

1.0 2022-8-10 New Issue



J3	
PIN	SYMBOL
1	GND
2	GND
3	BLK
4	LP
5	LCK
6	SID
7	VDD
8	VDD
9	BLA
10	BLA

J2	
PIN	SYMBOL
1	GND
2	GND
3	BLK
4	BLK
5	LP
6	LP
7	LCK
8	LCK
9	NC
10	SID
11	VDD
12	VDD
13	BLA
14	BLA

J1	
PIN	SYMBOL
1	BL+
2	NC
3	DD
4	SID
5	SCLK
6	LP
7	BLK
8	VSS

## SPECIFICATIONS:

- |                           |                              |
|---------------------------|------------------------------|
| 1. DISPLAY TYPE:          | TN / POSITIVE / TRANSMISSIVE |
| 2. DRIVE IC:              | 74HC595D or EQV.             |
| 3. CONNECTOR:             | PIN                          |
| 4. OPERATING VOLTAGE:     | 5.0V                         |
| 5. OPERATING TEMPERATURE: | -30 ~ 80°C                   |
| 6. STORAGE TEMPERATURE:   | -40 ~ 90°C                   |
| 7. DRIVE MODE:            | 1/1 DUTY, 1/1 BIAS           |
| 8. VIEWING ANGLE:         | 6 O'CLOCK                    |
| 9. CUSTOMER PART NO.:     | BOCEN STANDARD PRODUCT       |

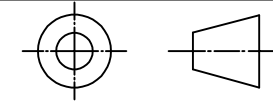
## BOCEN DISPLAY TECHNOLOGY CO., LTD.

DESIGNED BY: Shawn

BB1004-01

VERSION: 1.0

CHECKED BY: William



NO.: 1 OF 1

APPROVED BY: Rio

UNIT: mm

Website: <http://www.bocentech.com>

DATE: 2022-8-10