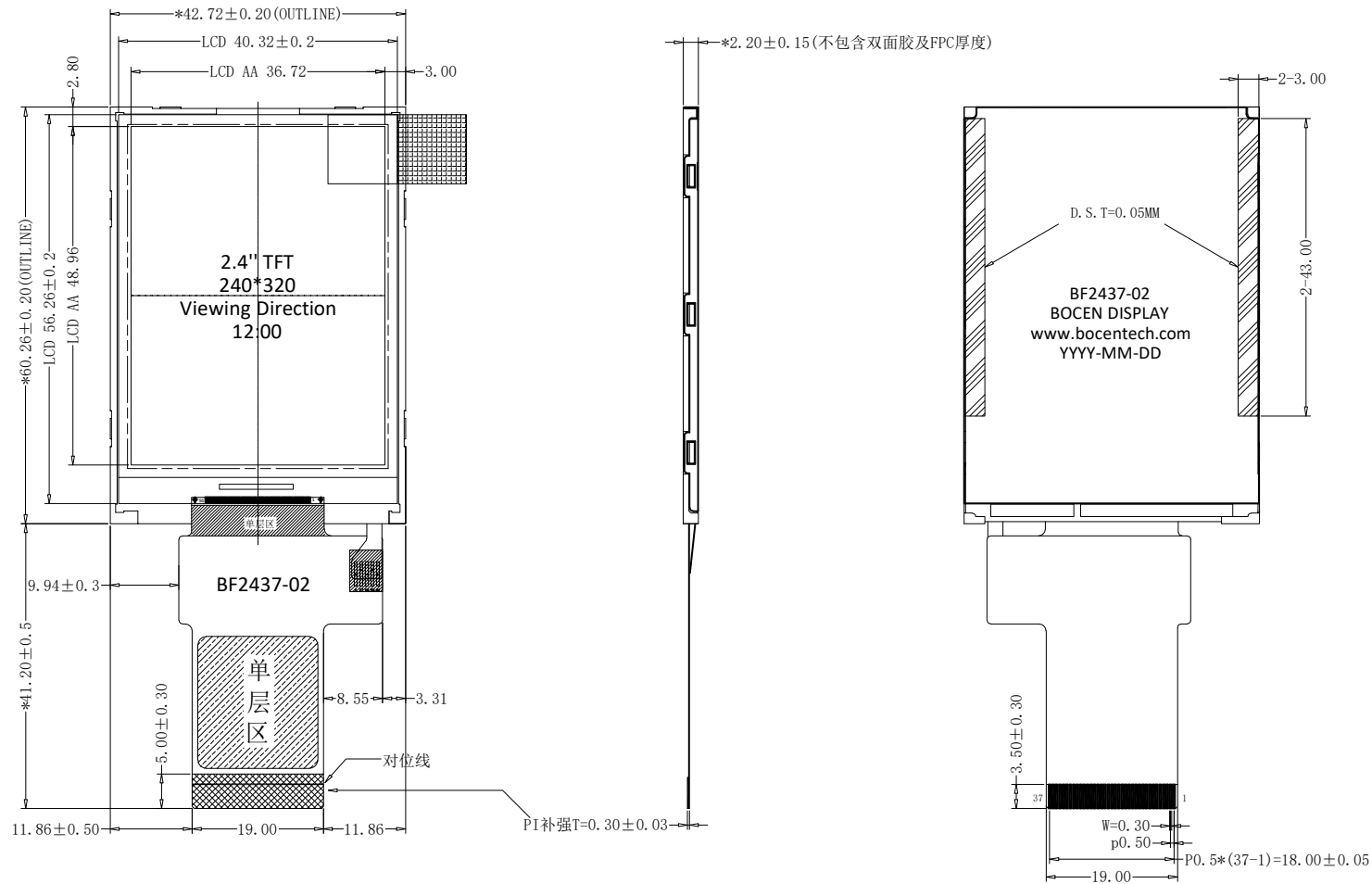


Version

1.0 2021-4-28 New Issue



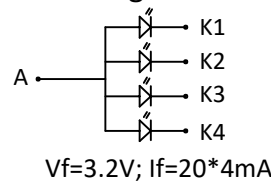
PIN	SYMBOL
1	DB0
2	DB1
3	DB2
4	DB3
5	GND
6	VDDI
7	CSX
8	DCX
9	WRX
10	RDX
11	NC
12	XL
13	YU
14	XR
15	YD
16	LEDA
17	LEDK1
18	LEDK2
19	LEDK3
20	LEDK4
21	FMARK
22	DB4
23	DB8
24	DB9
25	DB10
26	DB11
27	DB12
28	DB13
29	DB14
30	DB15
31	RESX
32	VDD
33	VDDI
34	GND
35	DB5
36	DB6
37	DB7

MCU 8BIT

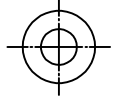
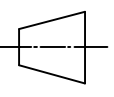
SPECIFICATIONS:

- | | |
|---------------------------|------------------------|
| 1. DISPLAY TYPE: | 2.4" TFT / TN / QVGA |
| 2. DRIVE IC: | ST7789V |
| 3. OPERATING TEMPERATURE: | -20 ~ 70°C |
| 4. STORAGE TEMPERATURE: | -30 ~ 80°C |
| 5. VIEWING ANGLE: | 12 O'CLOCK |
| 6. BACKLIGHT: | 4 LED / 80mA |
| 7. CUSTOMER PART NO.: | BOCEN STANDARD PRODUCT |

Backlight Circuit



BOCEN DISPLAY TECHNOLOGY CO., LTD.

DESIGNED BY: Shawn	BF2437-02	VERSION: 1.0
CHECKED BY: William		NO.: 1 OF 1
APPROVED BY: Rio		UNIT: mm
Website: http://www.bocentech.com		DATE: 2021-4-28