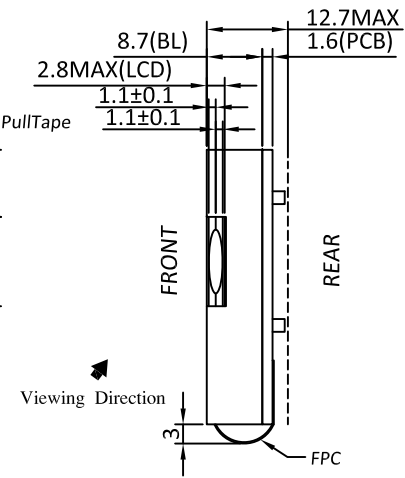
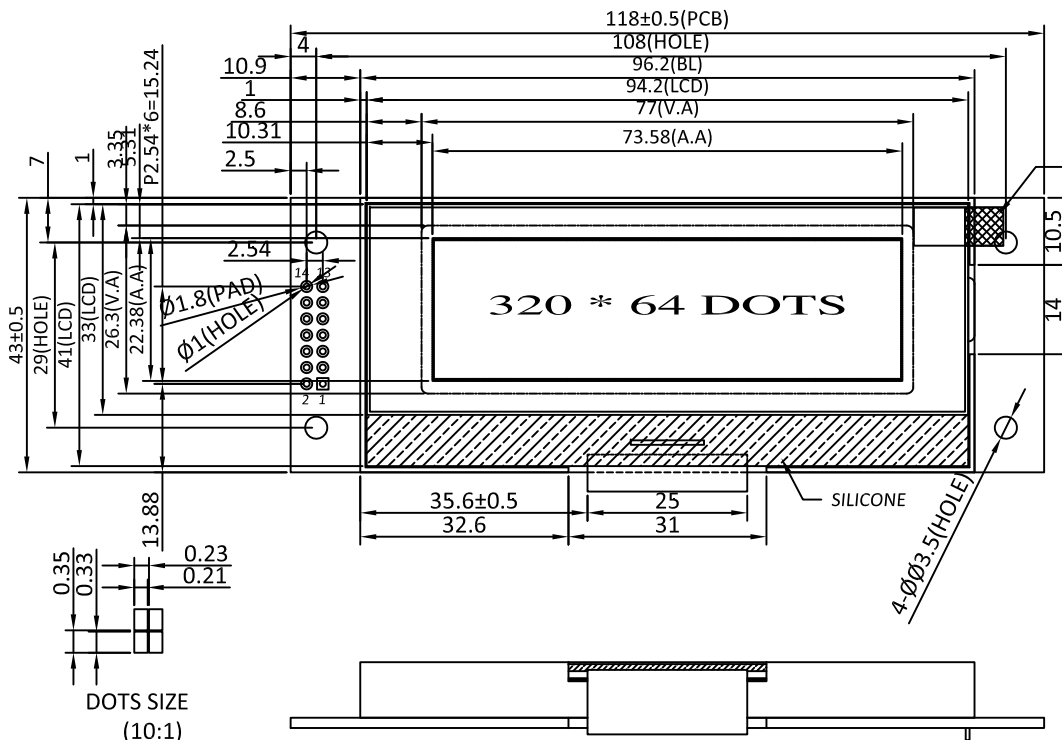
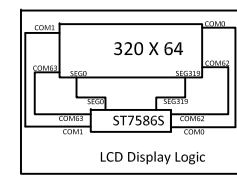
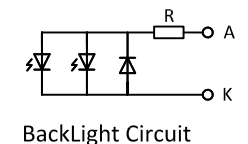
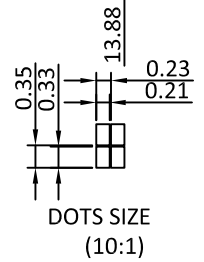


Revised Record

1.0 2017-03-11 New Issue

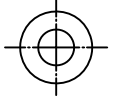
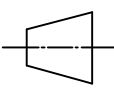


4LINE/3LINE	
PIN	SYMBOL
1	SCLK
2	SI
3	SO
4	CS#
5	VDD
6	VSS
7	CSB
8	IF1
9	RSTB
10	A0
11	SDA
12	SCL
13	LED_A
14	LED_K



SPECIFICATIONS:

- | | |
|---------------------------|--|
| 1. DISPLAY TYPE: | STN / Gray / POSITIVE / TRANSFLECTIVE |
| 2. DRIVE IC: | ST7586S |
| 3. OPERATING VOLTAGE: | V _{lcd} =12V; V _{dd} =3.3V |
| 4. OPERATING TEMPERATURE: | 0°C ~ +50°C |
| 5. STORAGE TEMPERATURE: | -20°C ~ +70°C |
| 6. DRIVE MODE: | 1/64DUTY, 1/9BIAS |
| 7. VIEWING ANGLE: | 6 O'CLOCK |
| 8. BACKLIGHT: | 2PCS White LED, V _F =3.4V; I _F =30mA |
| 9. CUSTOMER PART NO.: | BOCEN STANDARD PRODUCT |

BOCEN DISPLAY TECHNOLOGY CO., LTD.		
DESIGNED BY: Shawn	BG32064-01	VERSION: 1.0
CHECKED BY: William	 	NO.: 1 OF 3
APPROVED BY: Rio		UNIT: mm
Website: http://www.bocentech.com		DATE: 2017-03-11