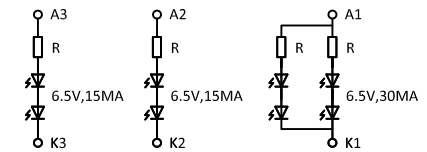


PIN	SYMBOL	PIN	SYMBOL
1	A0	22	CSB
2	RW/WR	23	VDD
3	D0	24	VSS
4	D1	25	VDD
5	D2	26	C7P
6	D3	27	C5P
7	D4	28	C3P
8	D5	29	C1N
9	D6	30	C1P
10	D7	31	C2P
11	D8	32	C2N
12	D9	33	C4P
13	D10	34	C6P
14	D11	35	VLCDIN
15	D12	36	VLCDOUT
16	D13	37	V4
17	D14	38	V3
18	D15	39	V2
19	E/RD	40	V1
20	RSTB	41	VOOUT
21	IF3	42	VOIN



SPECIFICATIONS:

- | | |
|---------------------------|----------------------------------|
| 1. DISPLAY TYPE: | FSTN / POSITIVE / TRANSFLECTIVE |
| 2. DRIVE IC: | ST7529 |
| 3. OPERATING VOLTAGE: | Vdd=3.3V; Vop=13.9V |
| 4. OPERATING TEMPERATURE: | -20°C ~ +70°C |
| 5. STORAGE TEMPERATURE: | -30°C ~ +80°C |
| 6. DRIVE MODE: | 1/160DUTY, 1/12 BIAS |
| 7. VIEWING ANGLE: | 6 O'CLOCK |
| 8. BACKLIGHT: | 8PCS White LED, VF=6.5V; IF=60mA |
| 9. CUSTOMER PART NO.: | BOCEN STANDARD PRODUCT |

BackLight Circuit(8 LEDS,6.5V,60MA)

BOCEN DISPLAY TECHNOLOGY CO., LTD.

DESIGNED BY: Shawn	BG160132-01	VERSION: 1.0
CHECKED BY: William		NO.: 1 OF 3
APPROVED BY: Rio		UNIT: mm
Website: http://www.bocentech.com		DATE: 2018-09-10