

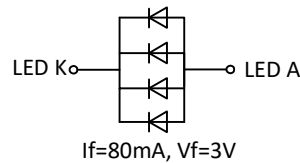
PIN	SYMBOL
1	LED-A
2	LED-K
3	LED-K
4	GND
5	VCI
6	RESET
7	NC
8	NC
9	SDA
10	SCK
11	CW
12	PCLK
13	DE
14	VSYNC
15	HSYNC
16~33	DB0~DB17
34	GND
35	TP-EINT
36	TP-SDA
37	TP-SCL
38	TP-RST
39	TP-VCI
40	GND

Interface:  
3SPI+18RGB

### SPECIFICATIONS:

- |                           |                          |
|---------------------------|--------------------------|
| 1. DISPLAY TYPE:          | 2.8" TFT / IPS / 480*480 |
| 2. DRIVE IC:              | ST7701S                  |
| 3. OPERATING TEMPERATURE: | -20 ~ 70°C               |
| 4. STORAGE TEMPERATURE:   | -30 ~ 80°C               |
| 5. VIEWING ANGLE:         | IPS                      |
| 6. BACKLIGHT:             | 4 WHITE LED              |
| 7. CUSTOMER PART NO.:     | BOCEN STANDARD PRODUCT   |

LED CIRCUIT DIAGRAM:



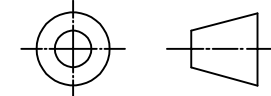
## BOCEN DISPLAY TECHNOLOGY CO., LTD.

DESIGNED BY: Shawn

**BF2840-03**

VERSION: 1.0

CHECKED BY: William



NO.: 1 OF 1

APPROVED BY: Rio

UNIT: mm

Website: <http://www.bocentech.com>

DATE: 2022-4-20