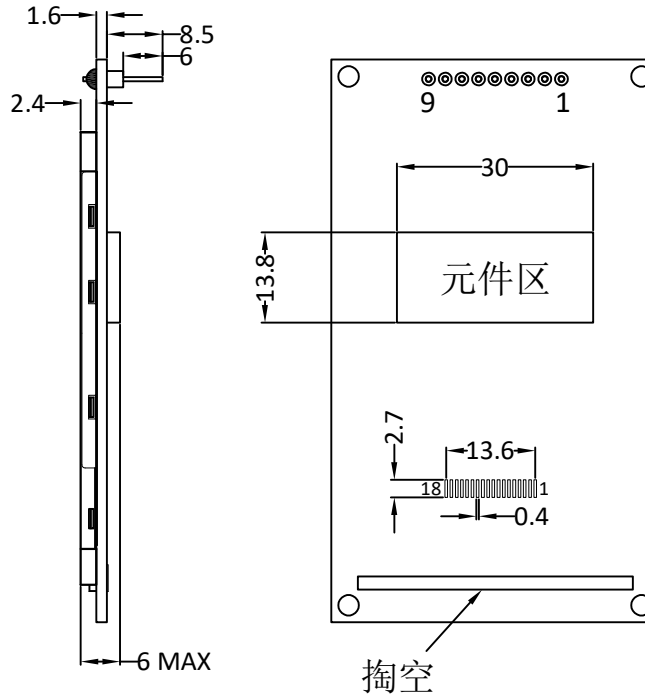
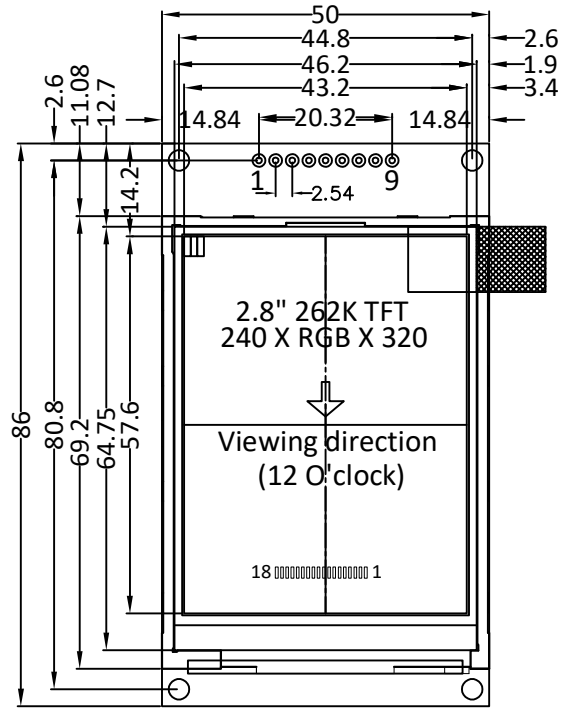


Revised Record

1.0 2022-3-28 New Issue



| PIN | SYMBOL |
|-----|------------|
| 1 | +5V |
| 2 | GND |
| 3 | RESET |
| 4 | SCL |
| 5 | D/C |
| 6 | CS |
| 7 | SDA |
| 8 | SDO |
| 9 | LED On/Off |

4 WIRE SPI

| PIN | SYMBOL |
|-----|--------|
| 1 | GND |
| 2 | RESET |
| 3 | SCL |
| 4 | D/C |
| 5 | CSX |
| 6 | SDA |
| 7 | SDO |
| 8 | GND |
| 9 | VDD |
| 10 | LEDA |
| 11 | LEDK1 |
| 12 | LEDK2 |
| 13 | LEDK3 |
| 14 | LEDK4 |
| 15 | XL |
| 16 | YU |
| 17 | XR |
| 18 | YD |

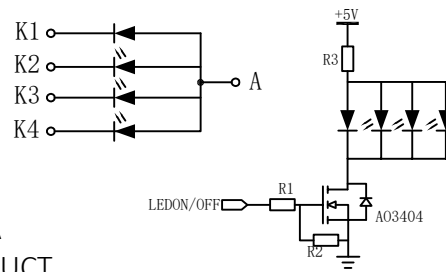
接到IC相关PIN脚需用IC转换电压

输入电压、通讯接口信号为5V输入

SPECIFICATIONS:

- 1. DISPLAY TYPE: 2.8" TFT / 240x320
- 2. DRIVE IC: ST7789V3
- 3. OPERATING TEMPERATURE: -20 ~ 70°C
- 4. STORAGE TEMPERATURE: -30 ~ 80°C
- 5. VIEWING ANGLE: 12 O'CLOCK
- 6. BACKLIGHT: 4-LED / PARALLEL / 80mA
- 7. CUSTOMER PART NO.: BOCEN STANDARD PRODUCT

Backlight Circuit diagram:



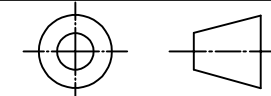
BOCEN DISPLAY TECHNOLOGY CO., LTD.

DESIGNED BY: Shawn

BF2818-01P

VERSION: 1.0

CHECKED BY: William



NO.: 1 OF 2

APPROVED BY: Rio

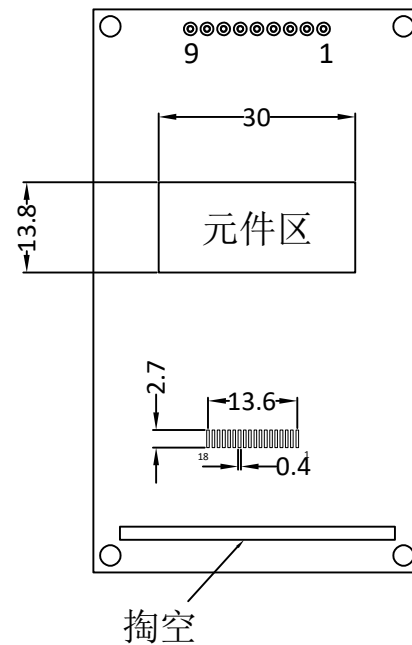
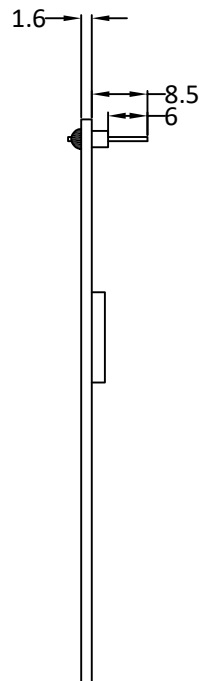
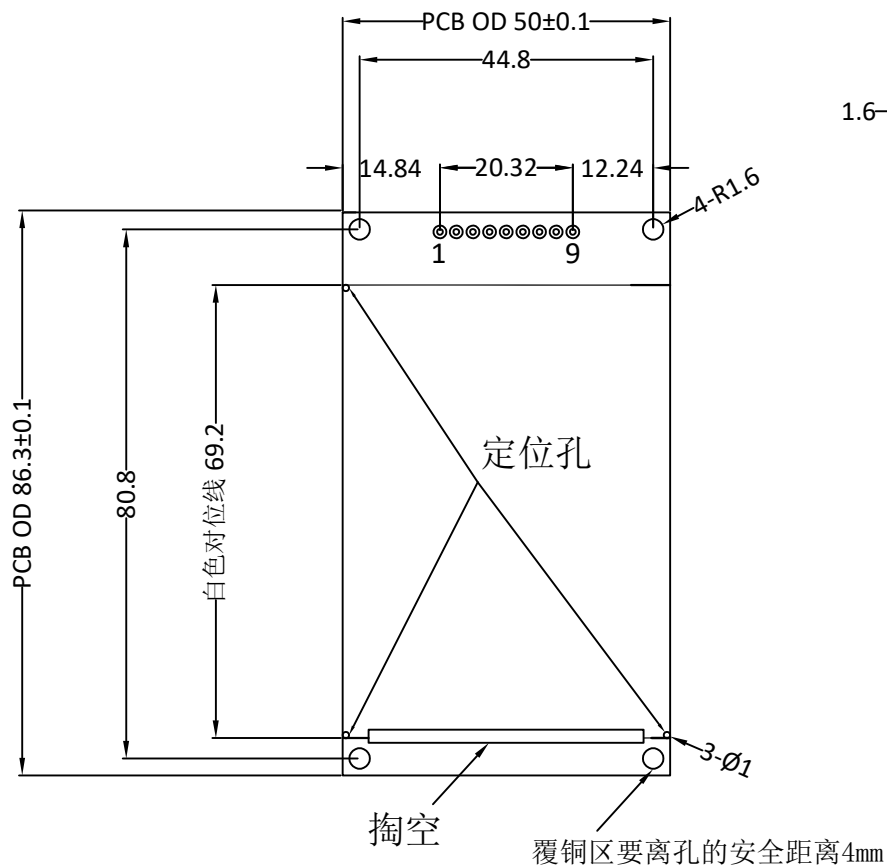
UNIT: mm

Website: <http://www.bocentech.com>

DATE: 2022-3-28

Revised Record

1.0 2022-3-28 New Issue



| PIN | SYMBOL |
|-----|------------|
| 1 | +5V |
| 2 | GND |
| 3 | RESET |
| 4 | SCL |
| 5 | D/C |
| 6 | CSX |
| 7 | SDA |
| 8 | SDO |
| 9 | LED ON/OFF |

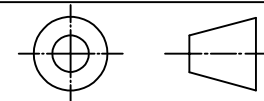
BOCEN DISPLAY TECHNOLOGY CO., LTD.

DESIGNED BY: Shawn

BF2818-01P

VERSION: 1.0

CHECKED BY: William



NO.: 2 OF 2

APPROVED BY: Rio

UNIT: mm

Website: <http://www.bocentech.com>

DATE: 2022-3-28