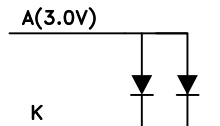
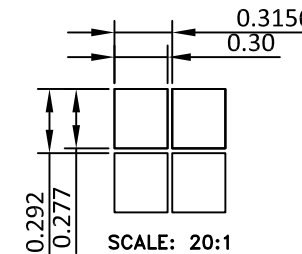


LCD LAYOUT

PIN	SYMBOL
1	LED K
2	LED A
3	CSO
4	RST
5	CD
6	SCK
7	SDA
8	VDD
9	VSS
10	VBO-
11	VBO+
12	VB1-
13	VB1+
14	VLCD

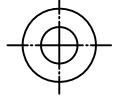
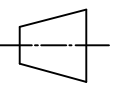


BACKLIGHT CIRCUIT
2PCS WHITE LEDS

SPECIFICATIONS:

- | | |
|---------------------------|----------------------------------|
| 1. DISPLAY TYPE: | FSTN / POSITIVE/ TRANSFLECTIVE |
| 2. DRIVE IC: | UC1604C |
| 3. OPERATING VOLTAGE: | Vop=10V; Vdd=3.3V |
| 4. OPERATING TEMPERATURE: | -20°C ~ +70°C |
| 5. STORAGE TEMPERATURE: | -30°C ~+80°C |
| 6. DRIVE MODE: | 1/64DUTY, 1/9BIAS |
| 7. VIEWING ANGLE: | 6 O'CLOCK |
| 8. BACKLIGHT: | 2PCS BLUE LEDS, IF=40mA, VF=3.0V |
| 9. CUSTOMER PART NO.: | BOCEN STANDARD PRODUCT |

BOCEN DISPLAY TECHNOLOGY CO., LTD.

DESIGNED BY: Shawn	BG16048-03	VERSION: 1.0
CHECKED BY: William		NO.: 1 OF 3
APPROVED BY: Rio		UNIT: mm
Website: http://www.bocentech.com		DATE: 2016-07-12