

CN1

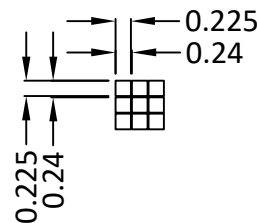
PIN	SYMBOL
1	VSS
2	VDD
3	V0
4	A0
5	/WR(R/W)
6	/RD(E)
7~14	DB0~DB7
15	/CS
16	/RST
17	VEE
18	SEL1
19	LED-A
20	LED-K
21	NC
22	NC

CN2

PIN	SYMBOL
1	D0
2	D1
3	D2
4	D3
5	/DISPOFF
6	FLM
7	M
8	LP
9	CP
10	VDD
11	VSS
12	VEE
13	V0
14	FG
15	(NC) LED-A
16	(NC) LED-K

SPECIFICATIONS:

- | | |
|---------------------------|--|
| 1. DISPLAY TYPE: | FSTN / POSITIVE (GRAY) / TRANSFLECTIVE |
| 2. DRIVE IC: | RA8835 or EQV. |
| 3. UNSPECIFIED TOLERANCE: | ±0.3 MM |
| 4. OPERATING VOLTAGE: | VDD = 3.3V |
| 5. OPERATING TEMPERATURE: | -20 ~ 70°C |
| 6. STORAGE TEMPERATURE: | -30 ~ 80°C |
| 7. DRIVE MODE: | 1/240 DUTY, 1/16 BIAS |
| 8. VIEWING ANGLE: | 6 O'CLOCK |
| 9. BACKLIGHT: | WHITE LED, VF = 5.0V |
| 10. CUSTOMER PART NO.: | BOCEN STANDARD PRODUCT |



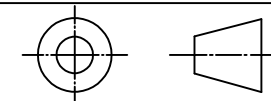
BOCEN DISPLAY TECHNOLOGY CO., LTD.

DESIGNED BY: Shawn

BB320240-09

VERSION: 1.0

CHECKED BY: William



NO.: 1 OF 1

APPROVED BY: Rio

UNIT: mm

Website: <http://www.bocentech.com>

DATE: 2013-10-8