

PIN	SYMBOL
1	FG
2	VSS
3	VDD(5V)
4	VEE
5	/WR
6	/RD
7	/CE
8	C/D
9	LEDA(5V)
10	/RST
11	DB0
12	DB1
13	DB2
14	DB3
15	DB4
16	DB5
17	DB6
18	DB7
19	FS
20	LEDK

### SPECIFICATIONS:

- |                           |                                       |
|---------------------------|---------------------------------------|
| 1. DISPLAY TYPE:          | STN / POSITIVE (GRAY) / TRANSFLECTIVE |
| 2. DRIVE IC:              | RA6963 or EQV.                        |
| 3. CONNECTOR:             | ZEBRA                                 |
| 4. OPERATING VOLTAGE:     | VOP = 12.2V, VDD = 5.0V               |
| 5. OPERATING TEMPERATURE: | -20 ~ 70°C                            |
| 6. STORAGE TEMPERATURE:   | -30 ~ 80°C                            |
| 7. DRIVE MODE:            | 1/64 DUTY, 1/9 BIAS                   |
| 8. VIEWING ANGLE:         | 6 O'CLOCK                             |
| 9. BACKLIGHT:             | WHITE LED, I = 120mA                  |
| 10. CUSTOMER PART NO.:    | BOCEN STANDARD PRODUCT                |

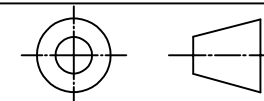
## BOCEN DISPLAY TECHNOLOGY CO., LTD.

DESIGNED BY: Shawn

**BB24064-02**

VERSION: 1.0

CHECKED BY: William



NO.: 1 OF 1

APPROVED BY: Rio

UNIT: mm

Website: <http://www.bocentech.com>

DATE: 2013-5-8