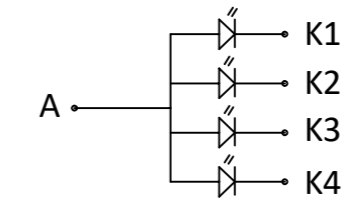


Backlight Circuit



Backlight drive Vf=3.2V; If=20*4mA

MCU interface
8080 8BIT

PIN	Symbol
1~4	DB0~DB3
5	GND
6	IOVCC
7	CS
8	RS
9	WR
10	RD
11	GND
12	XR
13	YD
14	XL
15	YU
16	LEDA
17	LEDK1
18	LEDK2
19	LEDK3
20	LEDK4
21	NC
22	DB4
23~30	DB10~DB17
31	RESET
32	VCI
33	IOVCC
34	GND
35~37	DB5~DB7

SPECIFICATIONS:

- | | |
|---------------------------|------------------------|
| 1. DISPLAY TYPE: | 2.4" TFT / TN / QVGA |
| 2. DRIVE IC: | ST7789V |
| 3. OPERATING TEMPERATURE: | -20 ~ 70°C |
| 4. STORAGE TEMPERATURE: | -30 ~ 80°C |
| 5. VIEWING ANGLE: | 12 O'CLOCK |
| 6. BACKLIGHT: | 4 LED / 20mA |
| 7. CUSTOMER PART NO.: | BOCEN STANDARD PRODUCT |

BOCEN DISPLAY TECHNOLOGY CO., LTD.

DESIGNED BY: Shawn	BF2437-01R	VERSION: 1.0
CHECKED BY: William		NO.: 1 OF 1
APPROVED BY: Rio		UNIT: mm
Website: http://www.bocentech.com		DATE: 2018-1-4