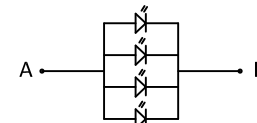


INTERFACE	
1	CS
2	RESET
3	RS
4	SCL
5	SDA
6	IOVCC(1.8V)
7	VCI(2.8V)
8	GND
9	TE
10	LEDA
11	LEDK

Backlight circuit (4 parallel)



BL drive VF=3.2V, If=20\*4mA

### SPECIFICATIONS:

- |                           |                         |
|---------------------------|-------------------------|
| 1. DISPLAY TYPE:          | 2.4" / TN / QVGA        |
| 2. DRIVE IC:              | ST7789V                 |
| 3. OPERATING TEMPERATURE: | -20 ~ 70°C              |
| 4. STORAGE TEMPERATURE:   | -30 ~ 80°C              |
| 5. VIEWING ANGLE:         | 12:00                   |
| 6. BACKLIGHT:             | 4LEDs / Parallel / 80mA |
| 7. CUSTOMER PART NO.:     | BOCEN STANDERD PRODUCT  |

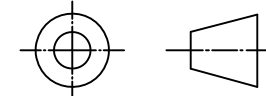
## BOCEN DISPLAY TECHNOLOGY CO., LTD.

DESIGNED BY: Shawn

**BF2411-01**

VERSION: 1.0

CHECKED BY: William



NO.: 1 OF 1

APPROVED BY: Rio

UNIT: mm

Website: <http://www.bocentech.com>

DATE: 2019-8-15