

BOCEN



COMPANY PRESENTATION

BOCEN DISPLAY TECHNOLOGY CO., LTD.

www.bocentech.com

INDEX

1

• **Company Profile**

2

• **Company Locations**

3

• **Company Development History**

4

• **Annual Turnover**

5

• **Product Categories**

6

• **Facilities**



Company Profile

- ▶ Founded in 2010
- ▶ Product Category: LCD panel, COB & COG module, TFT, OLED, Backlight
- ▶ 2 factories
- ▶ 500 employees
- ▶ 45 quality responsible persons
- ▶ 20 R&D persons
- ▶ 58,000 m² workshop
- ▶ ISO9001, RoHS certificates
- ▶ Annual turnover: 63.5 million US dollars

Company Locations



Shenzhen Office

Office

Address: 603, Esun tech building,
No. 22, Jia'an South Road, Bao'an District,
Shenzhen, Guangdong, China.



Shenzhen Factory

Samples & Small orders production

Address: 3F, Block 11, Huafeng International
Manufacturing Park, Wan'an Road, Shajing,
Bao'an District, Shenzhen, China.



Jiangxi Factory

Big orders production

Address: Bocen Chengxi Industrial Park
Gaoan, Yichun City, Jiangxi Province, China.

Company Development History

2010

- Company established in Shenzhen

2013

- First production site set up in Jiangxi China

2015

- Second production site set up in Shenzhen China

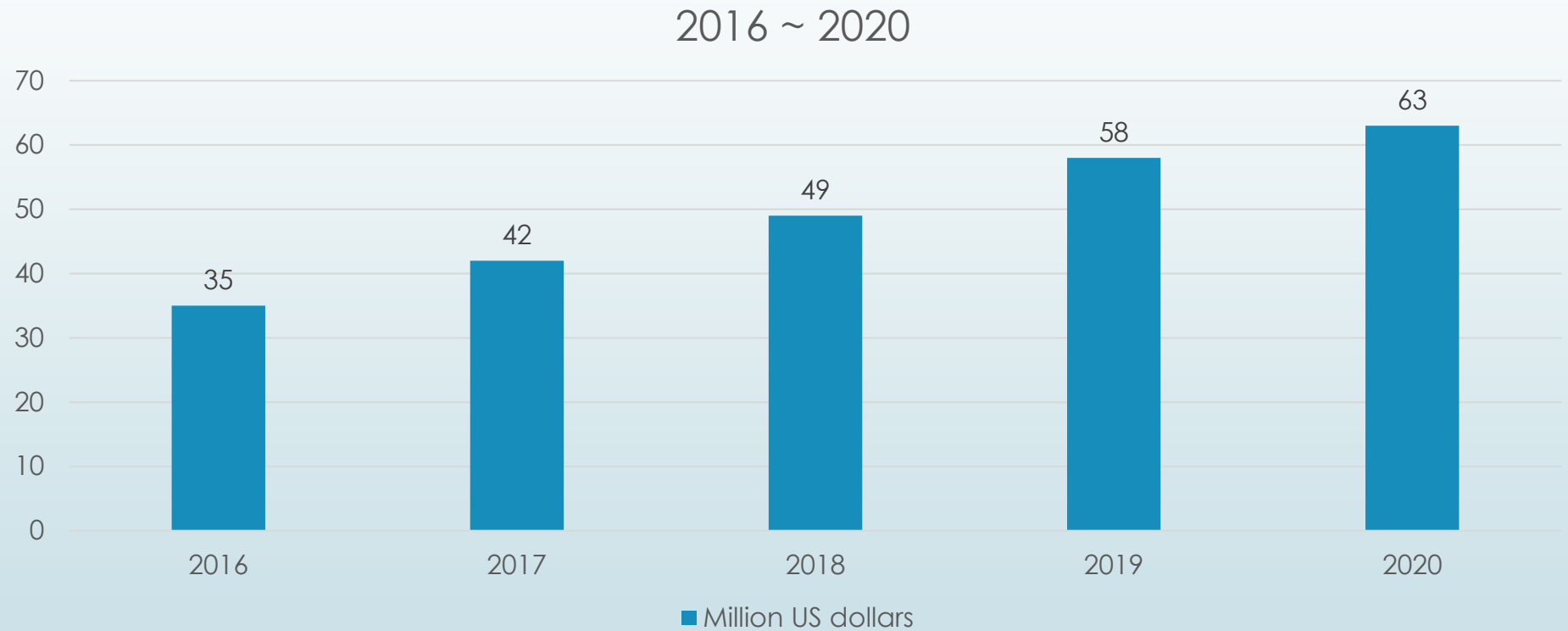
2018

- Employees up to 300 person

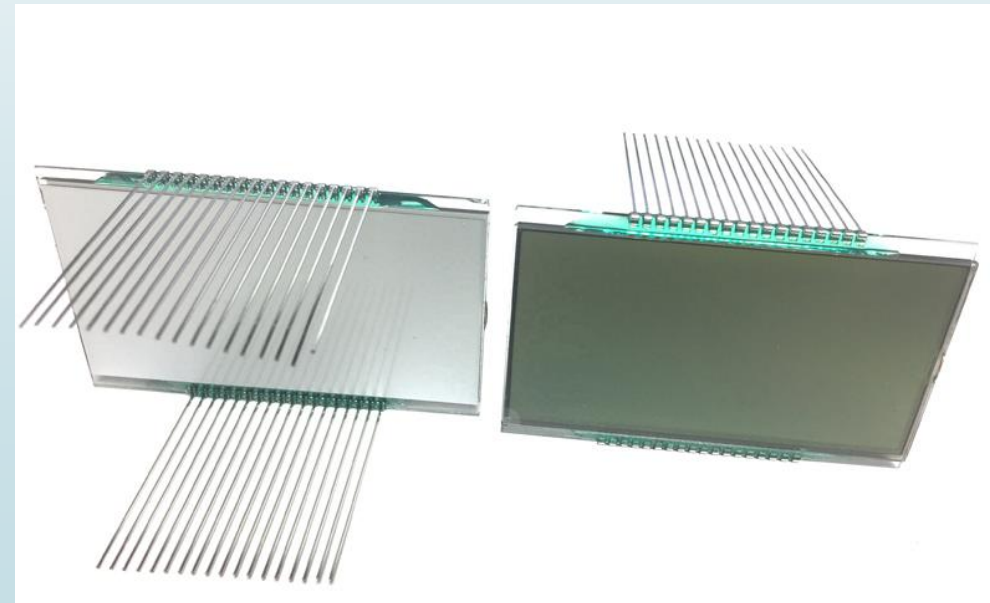
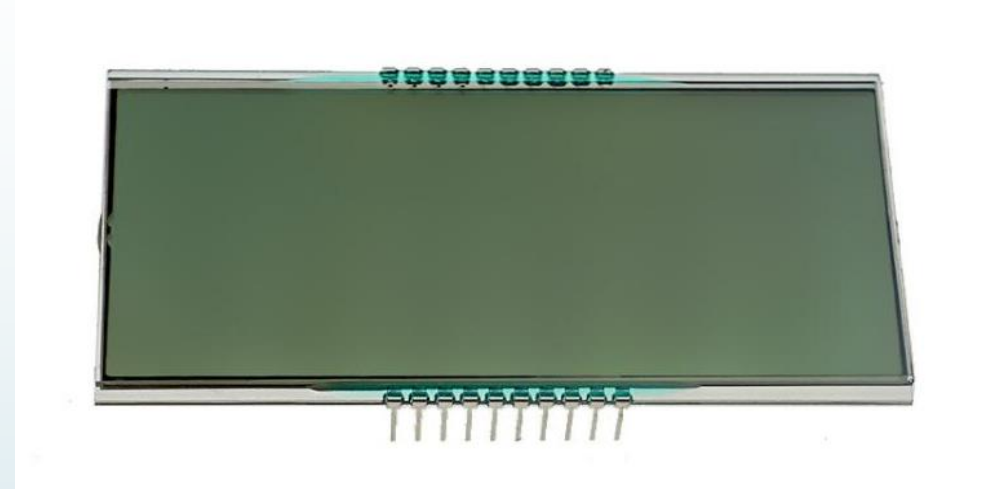
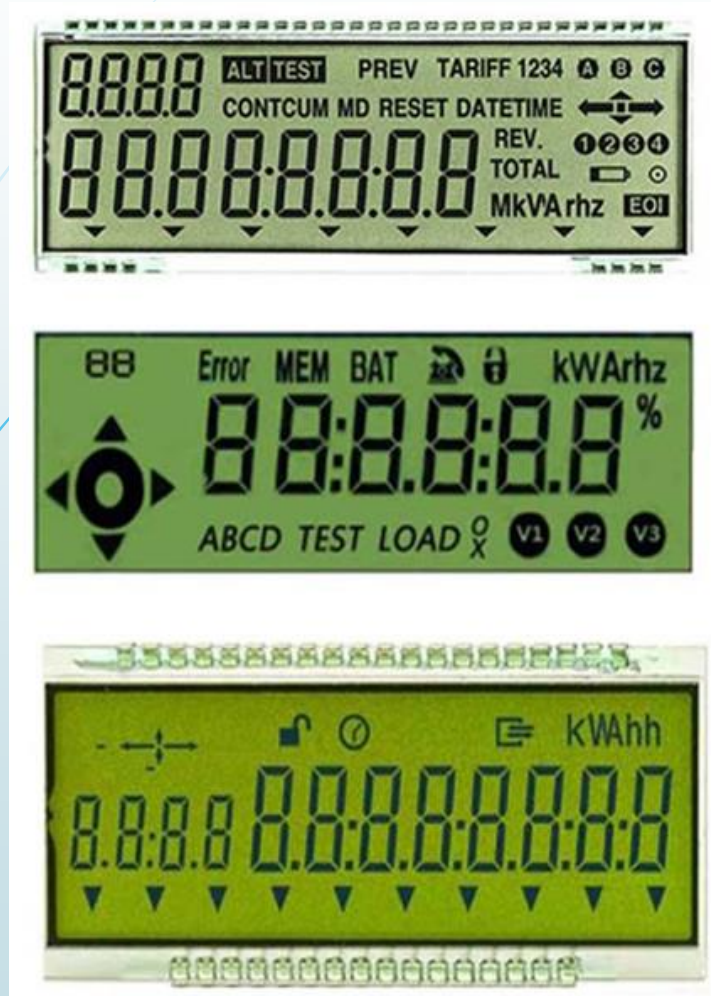
2020

- Set up OLED production line

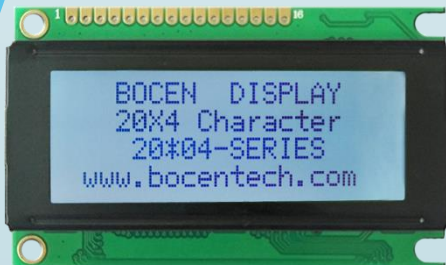
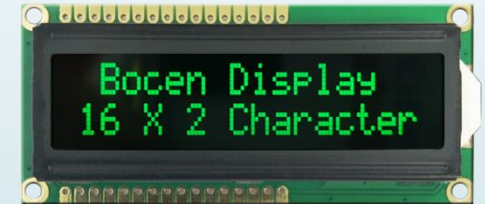
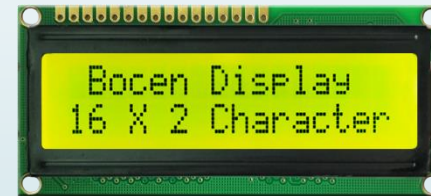
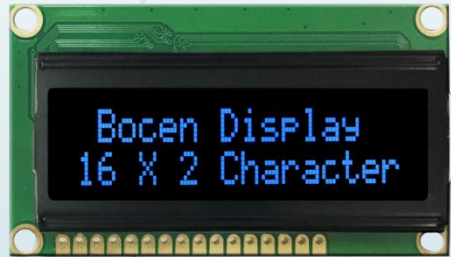
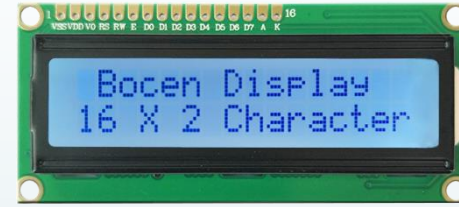
Annual Turnover



LCD Panel Product Categories



COB Product Categories



COG Product Categories



TFT Product Categories



OLED Product Categories



Application field



Facilities



The logo for BOCEN, consisting of the word "BOCEN" in a bold, red, sans-serif font. It is positioned in the top left corner of the slide. The background features a light blue gradient with several thin, curved blue lines on the left side and a solid blue arrow pointing right, partially overlapping the text area.

BOCEN

THANK YOU!

BOCEN DISPLAY TECHNOLOGY CO., LTD.

www.bocentech.com